



# IN THIS ISSUE



Board of Directors	Page 2
President's Report	Page 3
VP Technical Report	Page 5
Tech Corner	Page 6
AYP Report	Page 9
VP Legislative Report	Page 12

## MEETING FORMAT

6:00 – 6:30	Social
6:30 – 6:45	Announcements & Table Tops
6:45	Dinner Served
7:00 – 8:00	Presentation

DATE:	December 13, 2023
TIME:	6:00pm to 8:00pm
PLACE:	<a href="#">Olive Grove Restaurant</a>
TOPIC	Air Compressors
SPEAKER:	Will Dargan   Cummins-Wagner


[Register Today](#)



**Olive Grove**  
Restaurant & Lounge

705 N. HAMMONDS FERRY ROAD, LINTHICUM, MD 21090  
PHONE: 410-636-1385



 Local Chapters are not authorized to speak for the Society.  
Newsletter questions? Please contact [Nikita Patel](#)

# ASPE Baltimore Board of Directors



## **Vice President- Technical**

Julian Chiveral, LEED AP BD+C  
Julian.Chiveral@gmail.com



## **VP- Affiliate, Scholarship & Historian**

Jason J. Eagles  
Bay Associates Group  
Jason@bayassociates.com



## **Vice President- Membership**

Brian Crisp, CPD  
Johnson, Mirmiran & Thompson  
BCrisp@jmt.com



## **Women of ASPE- Liaison**

Karen Schulte, PE, CPD  
Mueller Associates  
KSchulte@muellerassoc.com



## **Administrative Secretary**

Jay Otto  
Otto Sales  
JayOtto@ottosales.com



## **President**

Charles J. Swope, PE, CPD, LEED AP B+C  
Mueller Associates  
president@baltimoreaspe.com



## **Vice President- Legislative**

Christopher Imhof, PE, CPD  
WSSC  
Christopher.Imhof@wsscwater.com



## **Treasurer**

Kathleen Dwyer-Stephens  
EJ Dwyer Company, Inc.  
KDwyer@ejdwyer.com



## **Education Chair**

Nikita Patel, PE  
Sherman Engineering Company  
npatel@shermanengineering.com



## **ASPE Young Professionals - Liaison**

Nicole Murphy  
Harry Eklof  
nmurphy@harryeklof.com



## **Corresponding Secretary**

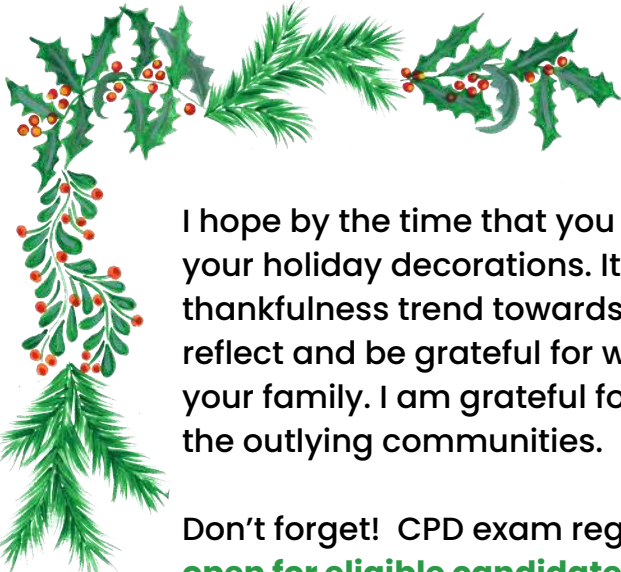
Matt Obenchain, PE  
Min Engineering, Inc.  
Matt.Obenchain@minengineering.com

## Newsletter Advertising

- As a paid advertiser, you will have your advertisement in the newsletter for one full year (9 editions) and company logo displayed on the Chapter website.
- Ads for the year will begin in the September issue and run through the May issue.
- All ads must be paid in full prior to the advertisement being included in the newsletter.
- Advertiser must provide ads in high resolution PDF format. Logo must be provided in .jpeg format, 200px wide size
- Cost per advertisement is as follows:
  - Full Page \$ 750.00
  - Half Page \$ 500.00
- Please contact Nikita Patel or Chuck Swope
- Make checks payable to Baltimore Chapter of ASPE. Please contact the Chapter Treasurer with any questions.



Chuck Swope, PE, CPD, LEED AP BD+C  
Chapter President

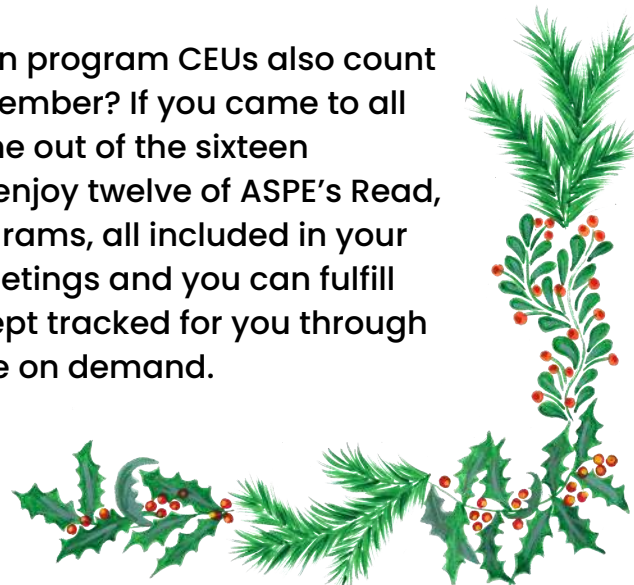


I hope by the time that you read this newsletter, you've started to put up your holiday decorations. It's no wonder why so many holidays of peace and thankfulness trend towards the end of the year. It is an excellent time to reflect and be grateful for what the year brought (or didn't bring) to you and your family. I am grateful for the support that our chapter gives itself and for the outlying communities.

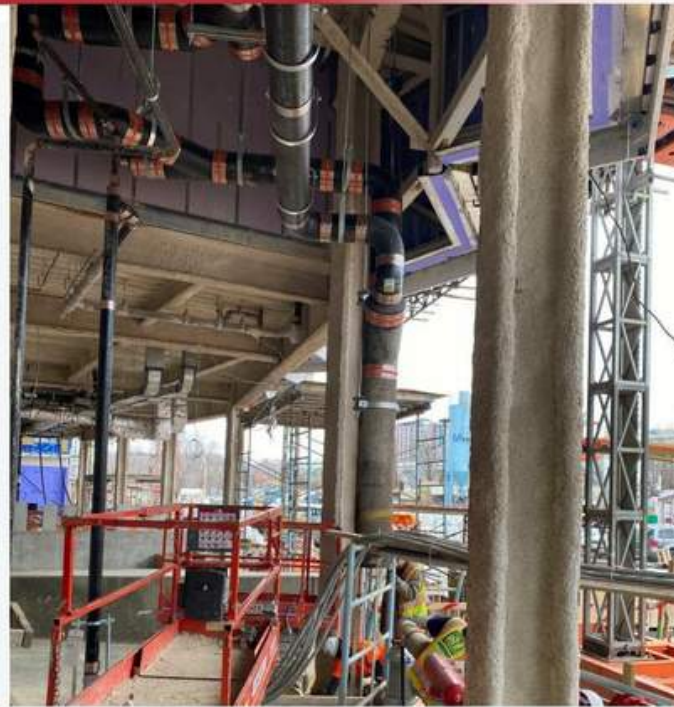
Don't forget! CPD exam registrations are open now. **Registration is now open for eligible candidates on ASPE Education.** The test will be held on April 15-26 and will be by remote proctor. No more waiting in line, no more waiting for your results!

The CPD program is the only international credential for engineers and designers of plumbing systems. It sets the standard for leadership within the industry and provides formal recognition of outstanding professionals with advanced skills in the design and specification of plumbing systems.

Did you know that all ASPE's continuing education program CEUs also count towards your Maryland PE, even if you're not a member? If you came to all our events planned this year, you would have nine out of the sixteen required credits to renew your PE. Members can enjoy twelve of ASPE's Read, Learn, and Earn CEUs as well as select other programs, all included in your membership. Add in a few Baltimore chapter meetings and you can fulfill your CEU requirements and have a surplus, all kept tracked for you through your education portal. Quite a deal and available on demand.



# SUPPORT FOR ASPE BALTIMORE



*Mueller Associates practices and promotes the link between good quality plumbing, health, environmental sustainability, and economic prosperity.*



**Mueller**

Mueller Associates  
1306 Concourse Drive, Suite 100  
Linthicum, MD 21090  
[www.muellerassoc.com](http://www.muellerassoc.com)  
410.646.4500

**ENGINEERING GREAT EXPERIENCES**



Julian Chiveral, LEED AP BD+C  
Vice President- Technical



Dearest ASPE Members,

As we deck our halls with lights and ornaments, our pipes join in the festive melody, humming a tune reminiscent of Mariah Carey. The chilly temperatures encourage a harmonious collaboration between plumbing and nature, creating a symphony of creaks and murmurs as water flows through the insulated veins of our buildings. It's a unique December serenade that only those in our profession can truly appreciate.

Before we dive into the holiday merriment, let's extend our heartfelt gratitude to the attendees and the esteemed presenter of our previous monthly meeting. Jim Webster, the sales engineer extraordinaire from Kelly Generator & Equipment, shared his insights into generator gas piping design. Jim's expertise illuminated the complexities of generator systems, and we appreciate the thorough exploration of this critical aspect of our plumbing landscape.

Our next monthly meeting is just around the corner, scheduled for December 13. We've adjusted the date a bit earlier this month to accommodate the holiday festivities. We understand that this season is a busy one, so we promise the meeting will be worth your while.

This month, we are thrilled to welcome Will Dargan, the Manager Engineer Services for Cummins-Wagner, as our presenter. With years of experience supporting MEP engineers, Will brings a wealth of knowledge on HVAC and plumbing systems. His expertise will shine as he delves into the intricate world of air compressors. Be prepared to gain valuable insights that will undoubtedly enhance your understanding of this crucial component in our plumbing toolkit.

As we gather on December 13, let's come together to celebrate the season, share knowledge, and fortify the bonds that make ASPE a vibrant community. Wishing you all a delightful December filled with warmth, laughter, and plenty of met deadlines!

Warm Regards,  
**Julian**  
Vice President- Technical

# Sustainability Flow: Rethinking Water in Schools

Plumbing engineers play a vital role in raising awareness about drinking water quality and reducing the use of plastic water bottles.

*November 3, 2023*

In the heart of our communities, there exists an environmental challenge in schools. Students of all ages rush through corridors, often clutching single-use plastic water bottles, unwittingly contributing to an issue with global consequences. Experts say by 2050, there will be more plastic in our oceans than fish (by weight), reports the World Economic Forum (<https://bit.ly/3rqzzu7>).

Water bottles are a major source of pollutants in the world. Yet, hope springs from unexpected sources.

At the crossroads of education and environmental stewardship stands the plumbing engineer — a vital part of the community, much like the schools they serve.

Plumbing engineers are vital for maintaining safe drinking water in schools. They ensure public health and safety, compliance with regulations, prevent contamination and often oversee maintenance. In essence, plumbing engineers are crucial for providing clean and safe drinking water in schools. Yet, students, staff and parents still may not trust the tap and instead opt for single-use plastic water bottles.

Upon review of several studies conducted in different universities worldwide, researchers determined that perceptions about water quality drive the choice between bottled water and tap water, notes Water Science & Technology magazine (<https://bit.ly/3EOp1rQ>). Those perceptions include how the water tastes, looks and smells and whether or not people think the water is safe to drink. Other factors come down to personal preference, convenience and price.

Interestingly, while many survey participants said they trusted they were getting safe drinking water from the tap, the majority said they couldn't know for sure. Of those unsure, 76% said they wouldn't know where to find that information. Only 20% of the participants believed bottled water quality is superior to tap water.

The question we must then ask is, if most people think tap water is probably safe to drink, how do we convince them to drink from water fountains and coolers and top off reusable bottles at bottle-filling stations?

## Plastic Single-Use Water Bottle Bans: Still Impactable

Only a few universities have implemented a single-use plastic bottle ban. While students like this idea and usually drive the change, it's not always practical. Some of the biggest hurdles to overcome are schools' contracts with beverage companies supplying bottled water, sodas, juice and energy drinks.

There is also a concern that if schools eliminate water as an option at campus vending machines, students will be forced to choose less healthy options. Of course, installing hydration stations, whether drinking fountains, water coolers or bottle fillers, to provide students with easy access to water alleviates that concern.

Universities and K-12 schools that find a ban impractical can still reduce single-use water bottles by learning from schools that successfully implement total bans. One of those successes is the Partnerships to Uplift Communities (PUC) Schools, a nonprofit charter school organization comprising 14 schools authorized by the Los Angeles Unified School District (<https://bit.ly/3PLQArX>).

How did they do it? According to Pathwater, the schools' partner in implementing the ban, there were three key components (<https://bit.ly/46f444Q>):

Providing affordable, reusable, 100% recyclable aluminum bottles;

# Sustainability Flow: Rethinking Water in Schools

Availability of water refill stations (one of Murdock Mfg.'s H2O-to-Go! touchless water bottle filling station per 2,000 students);

Environmental education to encourage reuse and recycling.

The first two critical components are simple, as solutions are widely available. It's the third, education and advocacy, and the role the plumbing engineer can play that we want to focus on here.

Is Tap Water Safe to Drink?

The study shows us that even when people think tap water is safe, they don't have evidence to support that opinion. On the one hand, they've been told their water is safe; on the other hand, they've also heard story (<https://bit.ly/450ZzjO>) after story (<https://bit.ly/3LxLUDs>) of tainted water supplies. It's no wonder there is so much confusion.

It's also no wonder that even people concerned about the amount of plastic in the environment will grab bottled water from convenience stores. First, it's readily available and second, better safe than sorry.

This is where plumbing engineers can give their clients and community added value. Instead of only working behind the scenes, doing your part to ensure the water systems are safe and compliant, be an educator and advocate!

A plumbing engineer can raise awareness about the importance of drinking water quality and help reduce the use of plastic water bottles in various ways:

- Educational workshops and seminars. Organize workshops or seminars for school administrators, staff, parents and students to educate them about the significance of drinking water quality. Explain potential risks, health implications and ways to ensure safe water.

Bring along the local utility's Consumer Confidence Report (always accessible via your utility's website). This includes information such as the source of the drinking water; any risk of contamination of that source; levels of any contaminants in the drinking water; information on nitrate, arsenic or lead in areas where these contaminants may be a concern; and much more.

- Informational brochures and pamphlets. Create informational materials explaining water quality and distribute them in schools. Include practical tips on how to identify and report water quality issues. You can also create posters next to hydration stations, simplifying the information gleaned from the utility's Consumer Confidence Report.
- Public speaking. Offer to speak at school board meetings, parent-teacher association gatherings or school assemblies to address any concerns about water quality. Use real-world examples of the effects single-use plastic bottles have on the environment.
- Online resources. Develop a website or online platform where people can easily access information on water quality, its significance and steps they can take to reduce their reliance on single-use plastic water bottles. Share articles, videos and infographics to engage a wider audience.
- Collaboration with health professionals. Partner with local health-care professionals or environmental agencies to co-host events or discussions about water quality at schools, places of employment and homes and its health implications. This interdisciplinary approach can provide a more comprehensive understanding of the issue.
- Social media campaigns. Use social media platforms to share facts, tips and updates related to water quality. Engage with the school community through posts, stories and live sessions to answer questions and address concerns.

# Sustainability Flow: Rethinking Water in Schools

- Water-testing programs. While your utility can guarantee the drinkability of the water it sends out of its facility, what happens after that is no longer their responsibility. Offer to conduct school water quality testing and share the results with the school community. Highlight any areas of concern and provide recommendations for improvement.

The Centers for Disease Control and Prevention developed an “Increasing Access to Drinking Water in Schools” toolkit that includes information about how to communicate testing results, whether positive or negative (<https://bit.ly/450xJ0W>).

- Partnerships with environmental organizations. Collaborate with environmental organizations focusing on water quality and conservation. The organizations are often equipped to talk to all age groups, and joint initiatives can help raise awareness on a larger scale. When you help people better understand where their water comes from, you raise awareness of the importance of stewardship of their local watershed – including keeping it free of plastics.
- Community events. Participate in community events, fairs or health expos where you can set up a booth or demonstration related to water quality. This provides an opportunity to engage with a broader audience.
- Engage with local media. Write op-eds or articles for local newspapers or magazines about school water quality concerns. Interviews on local radio or TV stations can also help spread the message and provide excellent exposure for your company.
- Demonstrations and tours. Offer tours of the school’s plumbing infrastructure to students, parents and staff. Show them the various components and explain how they contribute to water quality.
- Advocacy. Advocate for policies and regulations that promote water quality in schools. Engage with local government officials and school boards to push for improved water infrastructure and regular testing.

Using these methods, plumbing engineers can effectively raise awareness about the importance of drinking water quality, empowering schools and their communities to take proactive steps to ensure safe and clean water for all.

By posting eye-catching posters with up-to-date information alongside hydration stations, you can reassure students, faculty and staff that the water is safe to drink. You can go the extra mile by ordering water coolers and bottle fillers with a filtration system for added peace of mind.

Murdock Manufacturing engineers and manufactures durable, reusable bottle-filling stations ideal for schools of any type. They are sensor-operated to help prevent the spread of germs and the optional filters are NSF 42 and 53 certified as well as NSF 372 compliant.

*Traci Browne is a freelance writer specializing in manufacturing, engineering and emerging technologies.*

Hello everyone,

I hope you had a fantastic Thanksgiving celebration. I'm thrilled to announce an upcoming AYP Webinar on December 13th from 12:00 PM - 1:00 PM about Rainwater Harvesting. You can find all the details and registration information at this link: [AYP Region 1 - Q4 L&L - Rainwater Harvesting 101](#). I'm looking forward to seeing you at the December meeting, and stay tuned for more exciting events coming up. Happy Holidays to all!

Best regards,  
Nicole Murphy, Harry Eklof & Associates  
[nmurphy@harryeklof.com](mailto:nmurphy@harryeklof.com) • 443-926-6821



Nicole Murphy  
AYP Liaison

PROUDLY PROVIDING  
THERMOSTATIC BALANCING SOLUTIONS  
**FOR OVER 10 YEARS**



Hot Water Recirculation 

In 2012, CircuitSolver® was developed to conquer the challenges inherent to conventional manual balancing valves. As the market's first **thermostatic balancing valves** used for domestic hot water recirculation, CircuitSolver® balances a system based solely on temperature as opposed to pressure or flow to guarantee hot water at **every fixture**. Dynamically balancing a system, CircuitSolver® ultimately **ended complaints** about the lack of hot water, and eliminated balancing processes and callbacks.

 Cold Water Recirculation

Last year, we implemented our thermal actuator technology into the CircuitSolver® Union Cold Water balancing valves. These valves are installed in domestic Cold Water recirculation systems to mitigate the risk of Legionella and other bacterial growth. Cold water recirculation is becoming more prominent in hospitals to reduce water stagnation and ensure residual chlorine is distributed but can be beneficial to any commercial building that could experience periods of low flow or non-use.



# Hey Young Professionals!

REGION 1 AYP PRESENTS:

## Rainwater Harvesting 101

presented by

**RUSS JACKSON**



Russ Jackson acts as the Sales General Manager of RainHarvest Systems. Russ is a 15 year veteran of the water harvesting and reuse industry, and a 25 year veteran of the commercial construction industry. RainHarvest is a manufacturer of water pumping and treatment systems as well as the largest supplier of rainwater harvesting specific components and systems in North America. During his career, Russ has served on the committee that created the ICC/CSA 805 Rainwater Harvest Systems Standard, served on many related committees, including co-chair of the End Use Water Quality Task Force for the ICC/CSA 805 Rainwater Harvesting Systems Committee. He co-authored the Atlanta Potable Rainwater Ordinance, and has served on hundreds of rainwater harvest projects across the Americas.

### WHO

THIS WEBINAR IS OPEN TO ALL REGION 1 ASPE YOUNG PROFESSIONALS

### WHAT

1. BASIC PRINCIPLES
2. CURRENT TECHNOLOGIES
3. RELATED PRACTICES
4. COMMERCIAL SYSTEMS

### WHEN

WEDNESDAY  
DECEMBER 13, 2023  
12-1PM EST

**REGISTER**

THIS WEBINAR IS FREE TO ASPE MEMBERS.  
A \$5 FEE WILL APPLY TO NON-MEMBERS



# E.J. Dwyer Company

10910 Pump House RD  
Annapolis Junction, MD 20701

*+ years of professional service!*

## ***Proudly representing quality BAA compliant products:***

### AGS

[americangassafety.com](http://americangassafety.com)

Laboratory, Kitchen, CO2, Gas detector UL approved valves & enclosures. Emergency off button w/valve. Complete utility control for water. Merlin digital controller. **In Stock!**

### Aquarius Showers

[aquariusproducts.com](http://aquariusproducts.com)

Residential & commercial. Acrylic & gel-coat ADA compliant showers. Barrier free shower pans + tube replacement pans. **In Stock!**

### Bradley Corporation

[bradleycorp.com](http://bradleycorp.com)

Washfountains, lavatory centers, Halo emergency fixtures, repair parts. Natural quartz Evero, Verge, Advocate, Omni Deck, Washbar. Washrooms accessories. **In Stock!**

### Chicago Faucet Company

[chicagofaucets.com](http://chicagofaucets.com)

Quality faucets for commercial applications, now offering sensor faucets. Meet the no-lead laws with our E-cast products. Food service for your entire kitchen, restaurant needs. Full lines of back mount, deck mount styles with pre-rinse, glass & pot fillers, faucets built to last! **In Stock!**

### Chronomite Heaters

[chronomite.com](http://chronomite.com)

Electric instantaneous hot water heaters from 0.2gpm to high capacity. Instant-micro & insta-temp digital mixers for multiple applications. Including **Omni** laminar flow controls. **In Stock!**

### Circuit Solver

[circuitsolver.com](http://circuitsolver.com)

Thermostatic balancing valve, automatically & continuously maintains recirc temperature. Manufactured by **ThermOmegaTech**, inline valve eliminates time consuming balancing procedures.

### Comfort Designs

[comfortdesignsbathware.com](http://comfortdesignsbathware.com)

ADA compliant, tile finish & tub replacement fixtures. Shower pans, ADA units, multi-piece with solid surface finish. Asura trench drain. New integral trench drain w/zero threshold shower systems. **In Stock!**

### Filtrine Drinking Fountains

[Filtrine.com](http://Filtrine.com)

Drinking water products with a tradition of superior quality craftsmanship. Bottle filling stations, chillers, UV purifiers. Taste master carbon filters with stainless steel housing.

### Keltech Tankless Heaters

[keltech-inc.com](http://keltech-inc.com)

Commercial, industrial, & emergency applications. Precisely engineered, for quality tankless performance to suite your needs. 5kW to 144kW, ASME.

### ThermOmegaTech

[thermomegatech.com](http://thermomegatech.com)

Drain tempering valve - DTV - to add cold water to drain lines for codes. The STV - steam wash down station high temp mixing w/hose & wash down gun. Scald guard & freeze protection valves for emergency fixtures.



#### **Contact Us:**

[www.ejdwyer.com](http://www.ejdwyer.com)

Phone: 240-553-0112

Fax: 888-811-4830

[customerservice@ejdwyer.com](mailto:customerservice@ejdwyer.com)

**Kathy Dwyer - [kdwyer@ejdwyer.com](mailto:kdwyer@ejdwyer.com) - 443-250-0285**





Chris Imhof, PE, CPD  
Vice President – Legislative

## **EPA proposes to strengthen the Lead and Copper Rule – replace lead lines within 10 years**

On November 30th, the U.S. Environmental Protection Agency (EPA) announced a proposal to strengthen its Lead and Copper Rule that would require water systems across the country to replace lead service lines within 10 years.

The proposal is backed by a historic \$15 billion through the Bipartisan Infrastructure Law to replace lead service lines.

The proposed Lead and Copper Rule Improvements are a major advancement in protecting children and adults from these significant, and irreversible, health effects from lead in drinking water. Key provisions in the proposal include:

- Achieving 100% Lead Pipe Replacement within 10 years.
- Locating legacy lead pipes.
- Improving tap sampling.
- Lowering the Lead Action Level.
- Strengthening protections to reduce exposure

For full details of proposal, please read the following the press release, [\*Biden-Harris Administration Proposes to Strengthen the Lead and Copper Rule to Protect All Communities in America from Lead in Drinking Water\*](#)

## **Baltimore City and Baltimore County to Receive \$50 Million in Federal Funding to Find and Replace Lead Pipes**

Maryland to receive roughly \$150 million from the Bipartisan Infrastructure Law. The funding is specifically targeted for water utilities to locate and replace lead water pipes, in some cases, free of charge. The first allocation of \$80 million has been sent to utilities across the state, awarding Baltimore City the largest amount -- \$43.6 million -- to find and replace lead pipes for city residents. Baltimore County received \$6.5 million to inventory lead pipes in its disadvantaged communities. Baltimore City's DPW is planning to do is have the customers report, inspect their own pipe, their own water mains, and then tell us what pipe material it is. This approach will avoid entering private residences and disturbing homeowners. Without the federal money, it would cost each homeowner about \$4,700 to replace their lead water pipes.

For additional information, please read the following article, [\*Baltimore-area residents will be asked to check 229K+ water pipes for lead\*](#)

Chris Imhof, PE, CPD  
Vice President – Legislative

# ARE YOU RESPONSIBLE FOR DESIGNING COMPRESSED GAS AND VACUUM SYSTEMS?



## SINCE 1920, SHERMAN ENGINEERING

has been offering the optimum engineered vacuum and compressed gas systems in the Healthcare, Pharmaceutical, Chemical, Power, and General Industrial markets.

## OFFERING 24/7 EMERGENCY SERVICE

our factory trained and ASSE 6000 credentialed service technicians are available to manage preventative maintenance and emergency outages.



## QUESTIONS? CONTACT

Nikita Patel, PE  
570-899-9090  
npatel@shermanengineering.com  
1830 County Line Rd, Unit 303  
Huntingdon Valley, PA 19006

01

### Vacuum Pumps

Liquid Ring, Dry Rotary Vane, Dry Rotary Claw, Lubricated Rotary Screw, Lubricated Rotary Claw, Lubricated Rotary Vane, Ejectors

02

### Compressors

Oil Less Scroll, Oil Free Rotary Screw, Oil Free Rotary Claw, Oil Flooded Rotary Screw, Oil Flooded Reciprocating, Dryers, Drains, Purifiers, Filtration, Lubricants

03

### Medical Gases

ASSE 6060 Design Support, Medical Vacuum, Medical Air, Compressed Gas Manifolds, Medical Gas Outlets, Ceiling Columns, Pedestals, Alarm Panels, Zone Valve Boxes, Gas Monitors

04

### Field Services

Medical Gas Verification, 24/7 Field Service Technicians, Installation Assistance, Job Walks, Sizing & Selection, ASSE 6000 Training

05

### Engineering Services

Custom solutions for compressed gases and vacuum. Medical gas design sizing and pipe layout. Support within healthcare, pharmaceutical, chemical, power, and general industrial market segments.



# Ultra-reliable Electric and Gas-Fired Water Heaters



Built with AquaPLEX®  
Industry's Best  
Warranties



800.784.8326 | pvi.com

# Aegis® Eco-Friendly CO Heat Pump Water Heaters



The Cleaner  
Way to Heat

**Lync**®  
by **WATTS**

817.335.9531 | lyncbywatts.com/aegis



1432 Front Ave | Lutherville, MD 21093  
410-825-6616 | bayassociates.com | Jason@Bayassociates.com

# A Thinner Shield is Better!

## TRANSFERENCE OF TORQUE

Thicker gauge shield material blocks the torque from getting to the gasket. A thinner shield protects the gasket while allowing a more efficient transfer of torque therefore providing a better seal.

## DEFLECTION

A thinner shield is more forgiving, flexible, and malleable. It bends with the joint allowing the seal to remain strong. A thick shield is rigid and does not form itself over the joint.

## STEPPED JOINTS

The thinner shield allows the shield to conform over the stepped joint providing a more effective seal.



Interested in learning more? Contact Glenn Spilling, National Sales Manager  
gspilling@idealtridon.com | 615-686-7826

Or visit us online at [IdealTridon.com](http://IdealTridon.com)!



**CHARLOTTE**  
PIPE AND FOUNDRY COMPANY

**A NEW LEVEL OF COATING  
PERFORMANCE:  
EDGE HP IRON™**

**SPECIALLY COATED CAST IRON  
PIPE AND FITTINGS  
FOR AGGRESSIVE DWV APPLICATIONS**

Proudly represented by The Joyce Agency

The  
**JOYCE AGENCY**  
MANUFACTURERS REPRESENTATIVE



**SAL TERRANOVA**  
Field Technical Representative - Northeast USA  
Voicemail: 704-348-2236  
Cell: 704-315-9380  
steranova@charlottepipe.com



**SHAFER, TROXELL & HOWE Inc.**

97 C Monocacy Blvd  
Frederick, MD 21701

**STHinc.com**

**Representing:**

Grundfos • Peerless • Yeomans • PACO • Myers  
Hydromatic • SyncroFlo • Cougar Controls • Triple Clear  
Water Systems • Topp Industries • Primex Controls



**Sale and Service Specialization:**

Sump/Sewage Pump Stations • Water Booster Systems  
Fire Pump Systems • Rainwater Harvesting Systems • Dosing Pumps  
Point of Entry Water Filtration



**Contact Our Engineering Account Rep**

**800-233-7718 • Mark.Smullen@sthinc.com**

**Your Solutions Partner in MD, DC, VA, DE and WV**



# DURAGUARD® PRODUCT LINE



Public health and safety are a common concern. Targeted for commercial applications, Bemis has a comprehensive offering of seats with DuraGuard® Antimicrobial Built-In Seat Protection™ and STAY-TITE™.

## WHAT IS DURAGUARD?

DuraGuard is an antimicrobial property built into the toilet seat to inhibit the growth of bacteria. The active ingredient in DuraGuard is zinc pyrithione, a non-VOC (volatile organic compound), broad-spectrum, highly effective antimicrobial agent used to control mold, mildew, yeasts, fungi, algae, gram positive and negative bacteria. DuraGuard does not protect users or others against bacteria, viruses, germs, or other disease-causing organisms.

## WHAT IS STAY-TITE?

STAY-TITE Seat Fastening System™ anchors the toilet seat to the bowl by using a patented bolt design with a finned bushing and glass-filled nylon nut, eliminating the need to retighten the seat to the bowl after installation.

**CONTACT YOUR REP FOR  
ADDITIONAL INFORMATION**

OFFICE



HOSPITALITY



SCHOOLS



HEALTHCARE



## EVERY SYSTEM



- Wet Flow Tested to Design Conditions—Guaranteed Performance
- ASPE Recognized 70% Redundancy for Energy Savings
- No-Flow shut down without the use of Hydropneumatic Tanks
- Standard with surge suppressor and 100k AIC SCCR disconnect



(804) 798-2600

**Kemper Multi-Therm®** thermostatic balancing valves have been trusted for over 25 years. Packed with unique and innovative features, these compact thermostatic balancing valves offer unparalleled ingenuity, dependability, and trustworthiness.

**Thermal Disinfection**

Ability to manage high temperature disinfection practice is included.

**Thermal balancing cartridge**

Replaceable or serviceable while valve body remains connected to piping.

**Bronze valve body**

Dezincified, lead free

**Insulation clam shell**

Option for quick & tidy installation.



**Available port**

This port can be used for a BMS temperature sensor probe.

**Locking dial**

Set screw locks in the temperature setting hidden under a protective cap.

**Built in isolation valve**

This feature stops the flow of water through the valve.

**Adjustable temperature dial**

This feature provides flexibility and allows for real-time adjustments to the HW return temperature setting.

**Integrated port**

This port allows for the use of an optional temperature gage (display range 0 -176°F).

Contact for more information:

• [www.OttoSales.com](http://www.OttoSales.com) • (804) 798-2600

**KEMPER**  
WATER CONTROL SYSTEMS





## WATER TEMPERATURE SOLUTIONS START WITH LEONARD

- Self-balancing
  - Daily self-cleaning feature
  - ± 2 °F temperature accuracy
  - Integral check valves available
  - Flow rates ideal for small to mid-sized design projects
- Self-diagnostic
  - Digital electronic control with 2-line LCD display
  - Programmable temperature setpoint
  - Easy setup/easy error coding
  - Upon power failure, holds last set temperature to avoid thermal shock

PROTON SERIES: MODEL FEATURES GUIDE				
	Proton 1.0	Proton 2.0	Proton 2.5	Proton 3.0
Simple and intuitive user commissioning and setup	•	•	•	•
Alarms for when unit maintenance is required	•	•	•	•
User programmable set point range between 65 °F and 180 °F	•	•	•	•
Automatic hot/cold water shutoff upon cold/hot water inlet supply failure	•	•	•	•
Valve controls at time of no use: 0.0 GPM*	•	•	•	•
Single valves available in 1" to 3" valve outlet sizes	•	•	•	•
Manifold assemblies available in up to 6" valve outlet sizes	•	•	•	•
Enhanced controller with programmable disinfection mode		•	•	•
Three additional temperature probes (inlet hot, inlet cold, return temp.)		+	+	•
Five relay contacts that switch on during alarm states		+	+	+
Remote alerts to assist Maintenance and Service Personnel		+	+	+
Loss of power alert		+	+	+
Broken temperature probe alert		+	+	+
"Out of range" temperature alert (± 10 °F)		+	+	+
Motor connectivity and operation alert		+	+	+
Service required @90% full shuttle movement alert		+	+	+
Enhanced controller with BACnet MS/TP connection			•	•
Enhanced controller with Wi-Fi				•

\*When properly installed near the hot water source with a continuously operating recirculation pump

• Standard  
+ Optional

AVAILABLE FOR IMMEDIATE SHIPMENT FROM CLINTON, MD  
(301) 877-2300





**MPB-2022-USA**  
**SPECIFICATION**  
**DRAINAGE**  
**(LIT-067)**



**CLPB-2022**  
**LIGHT COMMERCIAL**  
**PRODUCTS**  
**(LIT-048)**



**AD-2022-USA**  
**ACCESS DOORS**  
**(LIT-043)**



**BECO-2022**  
**BACKFLOW PREVENTERS**  
**AND ACCESSORIES**  
**(LIT-071)**



**NH-2022-06**  
**NO HUB COUPLINGS**  
**(LIT-044)**



**TDPC-2023**  
**POLYMER CONCRETE**  
**TRENCH DRAINS**  
**(LIT-076)**



**TD-2023**  
**GRP & STEEL**  
**TRENCH DRAINS**  
**(LIT-046)**



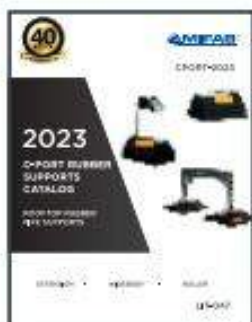
**TDSD-2023**  
**SHOWER DRAINS**  
**(LIT-077)**



**TDSS-2023**  
**STAINLESS STEEL**  
**TRENCH DRAINS**  
**(LIT-072)**



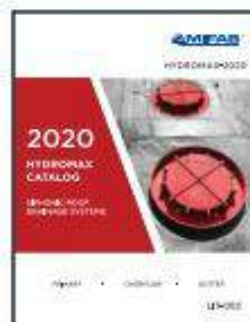
**ROOFGUARD-2020**  
**ROOFGUARD ROOF**  
**DOMES**  
**(LIT-058)**



**C-PORT-2023**  
**ROOFTOP RUBBER**  
**PIPE SUPPORTS**  
**(LIT-047)**



**DB-2022**  
**DIALYSIS BOXES**  
**(LIT-070)**



**HYDROMAX-2020**  
**SIPHONIC DRAINAGE**  
**(LIT-062)**



**INT-2023**  
**INTERCEPTORS & ACID**  
**NEUTRALIZATION TANKS**  
**(LIT-095)**



**TSP-2022-08**  
**TRAP SEAL**  
**PRIMERS**  
**(LIT-062)**





# POWERS INNOVATIONS

**DIGITAL MIXING SOLUTIONS ENABLE THE SAFE, EFFICIENT DELIVERY OF HOT WATER IN COMMERCIAL AND INSTITUTIONAL FACILITIES. BOTH PRODUCTS HAVE THE SAME FUNCTIONALITY BUT AT DIFFERENT FLOW CAPACITIES AND HELP TO PREVENT SCALDING WHILE SAVING ENERGY.**



## INTELLISTATION®

The IntelliStation®, with its large-capacity valves, is designed for use in hospitals, universities, and large hotels. The digital water mixing and recirculation solution can be integrated into a building automation system (BAS) to allow facilities managers to remotely monitor and control water temperatures. Help mitigate Legionella and other waterborne pathogens with the high-temperature sanitization mode. Key capabilities include a digital temperature regulation within  $\pm 2^{\circ}\text{F}$  to ASSE 1017, even during low and zero demand periods, and is field configurable without the need for a laptop or special software.

## INTELLISTATION® JR

IntelliStation® Jr. provides safe hot water consistently and on-demand for smaller applications than IntelliStation. It is also ASSE 1017 compliant, available in 3/4" through 2" sizes, and has a programmable temperature set-back/scheduling program that lowers water temperature when the building is unoccupied. Register the Jr. with the Watts OnSite mobile or web app for remote temperature control, monitoring, and visibility across locations and sublocations.

***Scan the QR Code below to access the Selexit Configuration Tool.***



**ASPE  
YOUNG  
PROFESSIONALS**

# Hey!

Exclusive AYP Sponsor

**ZURN**



## Learn more about our group!



**CASPE**  
American Society of  
Plumbing Engineers

Email [ayp@aspe.org](mailto:ayp@aspe.org) and visit [aspe.org](http://aspe.org).



## RESINTECH INC.

INNOVATIONS IN ION EXCHANGE

Premium quality water treatment products and services for residential, commercial, and laboratory applications.



**ION EXCHANGE RESIN  
ACTIVATED CARBON  
FILTER CARTRIDGES  
LAB WATER SYSTEMS  
WATER & RESIN TESTING  
RESIN REGENERATION**

**Made in the USA.**



Want to learn about ion exchange solutions for your application? Scan this code to explore our Lunch & Learn educational series. Schedule yours today!



**Experience Ease of Installation, Integration, and Control with Lawler's Fully Electronic Mixing Valve, Neptune!**



**Neptune EMX Electronic Mixing Valve**

- Accurate control of domestic hot water in all flow conditions
- Simple 3 button interface
- High temperature alarm
- Two valve installation in parallel with one controller
- ModBus communication standard
- Rugged lead-free stainless-steel valves
- ASSE 1017 and NSF 372 listed

**Neptune EMX Electronic Mixing Valve Manifold Systems for Recirculation**

- Plug-and-play
- Pre-assembled / tested
- Standard and custom designs

Contact your local rep or visit [www.temperedwater.com](http://www.temperedwater.com) for more information.



**OMNI SERIES Heat Pump Water Heaters**

**TO LEARN MORE CONTACT**  
Jason Eagles: Bay Associates  
[JASON@BAYASSOCIATES.COM](mailto:JASON@BAYASSOCIATES.COM)



**PBX**  
Fully integrated heat pump with 40-119 gallon capacity

**HHP SYSTEM**

Fully configurable heat pump system with 120-5000 gallon storage capacity and fully programmable controller



# BRADFORD WHITE WATER HEATERS & BOILERS

## Every Solution For Any Demand

At Bradford White, we deliver the solutions you need to meet the needs of your customers. Our products are all built with quality and engineered for outstanding efficiency and performance.

We offer tank and tankless water heaters, heat pump water heaters, boilers, as well as specialty tanks and pressure vessels.

On every job, you'll get 24/7 technical support from our team to make sure the product you spec works perfectly for your customer's needs. On every job, our business is being there for your business. Scan the QR code below for our RightSpec Sizing Tools.



3930 Avion Park Court • Chantilly, VA 20151

**THE JOYCE AGENCY** • thejoyceagency.com

MANUFACTURERS REPRESENTATIVE

**Matt Morris: mmorris@thejoyceagency.com**



### Built to be the Best®

©2023, Bradford White Corporation. All rights reserved.



Trusted above all.™

## VXR Dry Valve

**External reset feature makes the VXR a smart design with trusted technology.**

The VXR is an externally resettable, latching differential valve available in sizes ranging from 2 1/2" to 6" with groove by groove connections.

The valve is available for installation on dry pipe systems and features a light weight design with a small footprint.

Viking's VXR is offered in multiple trim options!

Shop online at [supplynet.com](http://supplynet.com).



With Viking's Valve & System Configurator, you can fully configure a complete Viking system riser in minutes. Get started today! Scan the QR code or visit [valveconfig.vikingcorp.com](http://valveconfig.vikingcorp.com).





PLUMBING GROUP



## Superior Performance & System Reliability

DuRa Pipe™ enhanced epoxy coating applied to cast iron soil pipe and fittings. It is well suited for aggressive DWV applications where greater performance is required.





# ASSOCIATED MECHANICAL EQUIPMENT SUPPLIERS



AMES, Inc. is a manufacturer's representative of water and wastewater treatment, pumping, and HVAC equipment. We serve the municipal, commercial, and industrial markets in Delaware, Maryland, Northern Virginia, West Virginia, and District of Columbia.

## PRODUCT OFFERINGS:

- Overwatch Direct Inline Pumping System
- Pumps
- Controls
- Water & Wastewater
- Packaged Systems
- Rainwater & Water Reuse
- Grease/Interceptor

## PARTS & SERVICES

- New Construction Field Service
- Warranty & Repair
- Maintenance Contracts
- Parts & Aftermarket Sales

**PARTNERING WITH THE INDUSTRY'S PREMIER BRANDS**



8918 Herman Drive | Columbia, MD 21045  
www.amesinc.com | info@ames.com



HOW CAN WE HELP?  
**410.995.8899**



# Highland Tank®



## PETROLEUM & CHEMICAL STORAGE TANKS

## WASTEWATER TREATMENT SYSTEMS

## GREASE REMOVAL SYSTEMS

## WATER STORAGE TANKS & ASME PRESSURE VESSELS



- Motor & Aviation Fuel
- Heating & Lube Oils
- Chemicals
- Biofuels
- Propane
- Underground
- Aboveground
- Fireguard®
- Horizontal
- Vertical
- Oil/Water Separators
- Oil/Sand Interceptors
- Solids Stormwater Interceptors
- Hydrocarbon Filtration Systems
- Collection Catch Basins
- Grease Interceptors
- Interior & Exterior
- Gravity & Automatic
- Rectangular & Cylindrical
- Solids Removal
- Rainwater Harvesting
- Greywater Reuse
- Potable Water
- Fire Protection
- Stormwater Management
- Chlorine Contact
- Hydropneumatic
- Specialty Pressure Vessels

Contact: Michael VanLenten Jr  
 mvanlentenjr@highlandtank.com  
 Phone: 814-254-8896

Please visit us at [www.highlandtank.com](http://www.highlandtank.com)

Manufacturers Representative Since 1968

# Harry Eklof

& Associates, Inc.

Representing:

 **CALEFFI**  
Hydronic Solutions



 **FIELD CONTROLS**



 **FUJITSU AIRSTAGE**



 **Navien**



 **FLORESTONE**  
A spec above.



**SCAN THE QR-CODE**

to get more information  
on product and training!



# Schedule of Events

<b>SEPT 27</b>	Communication Skills for Construction & Consulting	BJ Allen Warfel Construction
<b>OCT 25</b>	Vacuum System Design	Nikita Patel Sherman Engineering
<b>NOV 16</b>	Generator Basics	Jim Webster Kelly Generator & Equip.
<b>DEC 13</b>	Air Compressors	Will Dargan Cummins Wagner
<b>JAN 24</b>	Grease Interceptors	Schier Products
<b>FEB 28</b>	Fire Protection Specialties	Ken Isman University of Maryland
<b>MAR 27</b>	Fire Protection- Pre-Action Systems and Clean Agents	Josh Shapiro Reliable Sprinkler Co
<b>APR 24</b>	Siphonic Roof Drains	UV Systems
<b>APR 2024</b>	Annual Golf Tournament	Details to Follow
<b>MAY 22</b>	Natural Gas Sizing	Chuck Swope Mueller Associates ASPE Baltimore President
<b>JUN TBD</b>	Annual Summer Party	Details to Follow

MONTHLY  
SPONSORSHIP  
OPPORTUNITIES

**Tabletop Presentations:** \$100 to provide a tabletop presentation of equipment or material relative to the plumbing profession. The tabletops will be set up from the beginning to the end of the monthly meeting and provides the opportunity to provide a brief (under 5 minutes) presentation.

*Please make checks payable to the Baltimore Chapter of ASPE. Contact Kathy Dwyer or Chuck Swope if interested*