



B A L T I M O R E

Monthly Newsletter



JANUARY 2020

Upcoming Meeting

Date: January 22, 2020

Time: 6:00pm to 8:00pm

Place: [Olive Grove Restaurant](#)

Topic: Professional Ethics in Engineering

Speaker: McShane PC

Meeting Format

6-6:30 Social

6:30-6:45 Announcements and Table Tops

6:45 Dinner Served

7:00-8:00 Speaker



CHAPTER AWARD OF MERIT
Recipient 2017-2018
2018-2019

In This Issue

- Board of Directors -2
- Presidents Report -3
- AYP Report -3-4
- CPD Review Class -11
- Membership Report -19
- VP Technical Report -23
- Technical Article -24-26
- Meeting Schedule -35

MEETING LOCATION



Olive Grove
Restaurant & Lounge

705 North Hammonds Ferry Road
Linthicum, Maryland 21090
Phone: 410.636.1385

WWW.BALTIMOREASPE.COM

BOARD OF DIRECTORS

President, Historian

Jeffrey W. Edwards, CPD, GPD
Mueller Associates
jedwards@muellerassoc.com

Vice President - Technical

Charles J. Swope, PE, CPD, LEED AP BD+C
Mueller Associates
cswope@muellerassoc.com

Vice President - Legislative

J. Richard Wagner, PE
J. Richard Wagner, P.E., LLC
dick-wagner@comcast.net

Vice President - Membership

Brian Crisp, CPD
Johnson, Mirmiran & Thompson
BCrisp@jmt.com

VP Affiliate, Scholarship, Newsletter

Jason J. Eagles
Bay Associates Group
jason@bayassociates.com

Education Committee Chair

Christopher Imhof, PE, CPD
WSSC
Christopher.imhof@wsscwater.com

Treasurer

Kathleen Dwyer
EJ Dwyer Company Inc.
kdwyer@ejdwyer.com

Corresponding Secretary

Matt Obenchain, PE
Kibart
meo@kibart.com

WOA—Liaison

Karen Schulte, PE, CPD
Mueller Associates
kschulte@muellerassoc.com

AYP—Liaison

Nikita Patel, E.I.T, M.B.A
The Sherman Engineering Company
npatel@shermanengineering.com

Administrative Secretary

Jay Otto
Otto Sales
jayotto@ottosales.com

ADVERTISING

Newsletter Advertising:

- As a paid advertiser you will have your advertisement in the newsletter for a full year (9 editions) and company logo displayed on the Chapter website.
- Ads for the year will begin in the September issue and run through the May issue.
- All ads must be paid in full prior to the advertisement being included in the newsletter.
- Advertiser must provide ads in high resolution PDF format. Logo must be provided in .jpeg format 200px wide max.
- Cost per advertisement size is as follows:

<u>Size</u>	<u>Per Year</u>
Full page	\$750
½ page	\$500
Bus. Card	\$250

Please Contact [Jason Eagles](#) or [Jeff Edwards](#)

Make checks payable to Baltimore Chapter of ASPE. Please contact the chapter Treasurer with any questions.

Kathy Dwyer
EJ Dwyer Company Inc.
kdwyer@ejdwyer.com





Jeffrey W. Edwards, CPD ,GPD
President

President's Report

Happy New Year to everyone.

Before starting this report, I went back and looked at my previous January reports. Several of them had me discussing the snow we had received at this time of the year. As you know, we have been lucky so far without any major snow falls. What are the odds now that after I write about this, we could be hit with a major snow fall soon, LOL!!

I want to thank everyone who attended our Holiday Party in December at Mustang Alleys. It was another successful and fun event.

Our monthly meeting schedule starts back-up this month with another great technical presentation scheduled. Our attendance for our meetings has been strong and with the great technical topics scheduled, I expect attendance to remain strong.

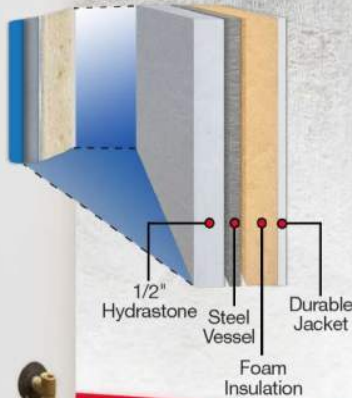
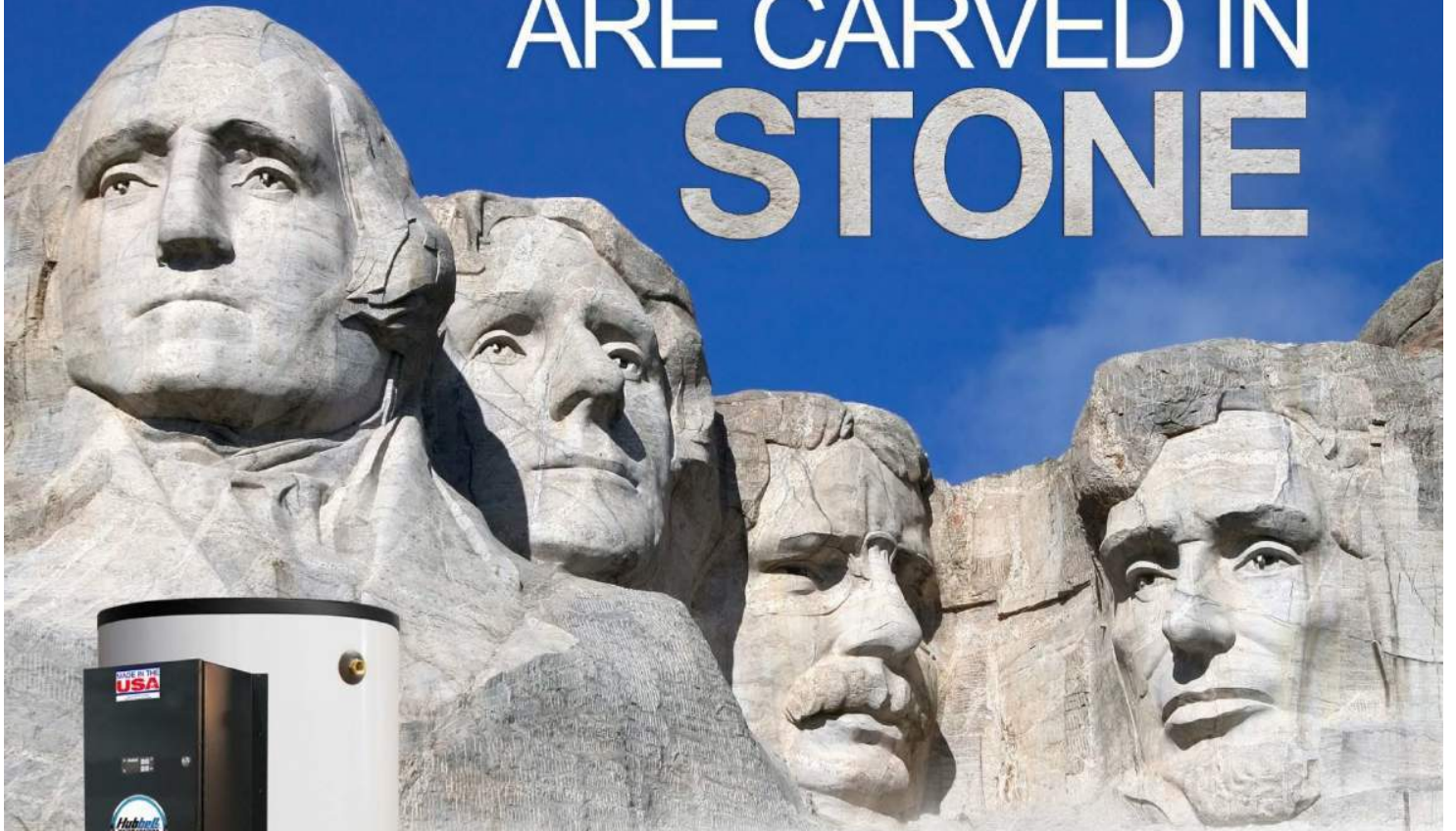
Our AYP event is just weeks away, so be sure to read the flier in this months newsletter for additional information.

If there is anything you'd like to discuss for our chapter, please don't hesitate to contact me.

Best Regards,
Jeff Edwards, CPD, GPD
President-ASPE Baltimore Chapter

Mueller Associates, Inc. Consulting Engineers	Jeffrey W. Edwards, CPD, GPD Chief – Plumbing & Fire Protection
1306 Concourse Drive, Suite 100 Linthicum, MD 21090 410.646.4500 tel > 410.646.4738 fax 410.913.4135 cell jedwards@muellerassoc.com	
Mechanical/Electrical Engineering	

GREAT LEADERS ARE CARVED IN STONE



Hubbell HydraSTONE, a true LEADER

Through 3rd party analysis provided by Nationally recognized Utility Rental Programs using Hubbell Hydrastone lined tanks found over the past 60+ years an average life span of over 20+ years. In fact, the longest running tank that we are aware of has over 60 years of service and is still going strong!

- 1/2" thick Hydrastone cement is 100x thicker than glass
- Highly resistant to corrosion from harsh effects of hot water
- No sacrificial anode rod is require

Hubbell water heaters are available in electric, gas, steam and indirect.

Represented by:

BAY
Associates

Bay Associates Group | 1432 Front Ave | Lutherville, MD 21093 | P: 410.825.6616
For More Information: Contact - Jason Eagles Jason@bayassociates.com

Hubbell
WATER HEATERS™

hubbellheaters.com



Highland Tank®



Petroleum & Chemical Storage Tanks



Wastewater Treatment Systems



Grease Removal Systems



ASME Pressure Vessels & Water Storage Tanks



- Motor & Aviation Fuel
- Heating & Lube Oils
- Chemicals
- Biofuels
- Propane
- Underground
- Aboveground
- Fireguard
- Diked
- Horizontal
- Vertical

- Oil/Water Separators
- Oil/Sand Interceptors
- Solids Stormwater Interceptors
- Hydrocarbon Filtration Systems
- Collection Catch Basins

- Grease Interceptors
- Interior & Exterior
- Large & Small
- Rectangular & Cylindrical
- Solids Removal

- Rainwater Harvesting
- Greywater Reuse
- Potable Water
- Fire Protection
- Boiler Blow-Down
- Chlorine Contact
- Hydropneumatic
- Specialty Pressure Vessels

Contact: Chas Tevis
 ctevis@highlandtank.com
 Phone: 814-360-0101

Please visit us at www.highlandtank.com

LUNCH AND EARN.



Learn about Environmental Sustainability of Cast Iron including: sustainable building products, resilient building, and environmentally friendly manufacturing. Attend a Lunch and Learn and earn CEUs.

Contact your local technical services manager today.



LEARN MORE:
mcwanep plumbingtechservices.com





Nikita Patel, EIT, MBA
AYP Liaison

AYP Report

Hello and welcome to the new year! If you thought last year was a blast, just wait until you see what we have in store for you over the next few months. Last year, we began a project that I've had a lot of fun helping out with, our Member Spotlight Series on LinkedIn. Each week, we interview a different member of our chapter and learn something new about them. If you don't follow us, you can find us at <https://www.linkedin.com/company/aspebaltimore> to read these stories.

I am delighted to announce we have successfully planned our Young Professionals outing for next month. I hope our younger members will be able to join me next month, February 13th, from 6-8PM at Five Iron Golf in Baltimore. A registration link will be sent out shortly. We will be practicing our golf swings with their state of the art technology in anticipation of our Annual Golf Outing at The Timbers at Troy. You are welcome to bring your own clubs or use the clubs they provide. Food and drinks will be provided. I look forward to seeing you there!

Thanks,
Niki

Nikita Patel, E.I.T., M.B.A.
Sales Engineer

Phone: (215) 340-5300
Cell: (570) 899-9090
Fax: (215) 340-5305
npatel@shermanengineering.com

1830 County Line Road
Unit #303
Huntingdon Valley, PA 19006

24-HOUR EMERGENCY: 215-340-5300
www.shermanengineering.com



**ASPE
YOUNG
PROFESSIONALS**



FIVE IRON GOLF
fiveirongolf.com/baltimore
415 South Central Ave, Baltimore, MD

THURSDAY, FEBRUARY 13

6 to 8 pm

Join *AYP for some indoor golf via top-of-the-line simulation technology. Bring your own clubs or choose from those provided at the venue. Serious golfers practicing for our Chapter's golf outing or those just looking for a little fun are all invited!

**RSVP by:
January 31, 2020**

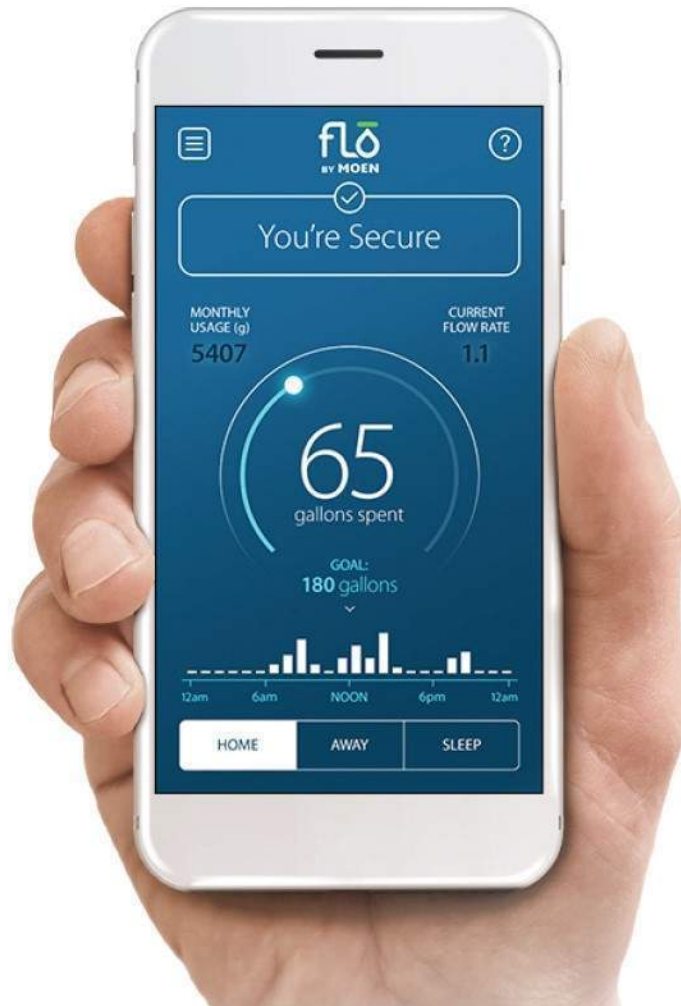
Register online at:

baltimoreaspe.com/meetinginfo.php

**Only for AYP members, 35 and younger*

Your Water at Your Fingertips

Flo by Moen™ - the all-in-one security system for your home's water.



flo BY MOEN.

The best way to avoid water damage is to prevent it.

- Learn a home's typical water habits and spot hidden pipe leaks, as small as one drop per minute
- Remote and automatic water shutoff options to help prevent catastrophic damage
- Helps homeowners understand consumption and set goals to help save water and money
- Homeowners who use Flo by Moen could be eligible to save on their insurance policies

Learn more: moen.com/flo

Installs on the main water line. Moen recommends installation by a certified plumber.



Superior Reliability with the Industry's Best Warranties



Power VTX
500 to 1000 MBH
225 gallon tanks

Conquest
199 to 1000 MBH
100, 130 gallon tanks

PVI's Conquest® and Power VTX® are two of the most reliable condensing water heaters for the commercial market. With 96% efficiency, Conquest and Power VTX feature tanks and heat exchangers fabricated exclusively from AquaPLEX® duplex stainless steel, and are backed by a 15-year tank warranty (8 years full, 7 years prorated). Learn more at pvi.com.

AquaPLEX®
Engineered Duplex Alloy

Represented by:
Bay Associates Group, bayassociates.com
Contact: Jason Eagles, Jason@bayassociates.com



ESTABLISHED 1920
MEDICAL | SCIENCE | INDUSTRIAL

Since 1920, Sherman Engineering has been offering the optimum engineered vacuum and compressed gas systems in the industry.

24/7 EMERGENCY SERVICE 1830 County Line Rd #303
(215) 340-5300 Huntingdon Valley, PA
19006

www.shermanengineering.com

- Vacuum Pumps
- Compressors
- Dryers & Purifiers
- Manifolds
- Standard Xchange Heat Exchangers
- Medical Gas Pipeline Equipment
- Field Services
- Custom Engineering Solutions & Packages
- Parts-Complete OEM Replacements



AUTHORIZED REPRESENTATIVES FOR...



Serving the Pharmaceutical, Chemical, Hospital and Power Industries • 24/7 Service Covering CT, NY, NJ, PA, MD & DE

CPD Review Class 2020

The Washington DC and Baltimore ASPE Chapters will be providing a joint Baltimore-Washington, DC ASPE Chapter CPD Review Session on Saturday, February 1, 2020 at the training center of E.J. Dwyer Co. in Annapolis Junction, MD. (Note: A bad weather make-up date will be scheduled for no later than Saturday, February 29th.) The session will be from 8:30 AM to 3:30 PM (or longer as needed) with a lunch break. Bagels, juice & coffee in the morning and lunch will be provided by the good people of E.J. Dwyer Co. Directions to the office in Annapolis Junction (north of Laurel) may be found on their company website at www.ejdwyer.com under Contact Us or by clicking google maps link: <https://goo.gl/maps/4nEvRNG6kEK2>

Any ASPE member interested in attending this session is required to forward an e-mail to either Kathy Dwyer or Ned Dwyer at the following respective addresses: kdwyer@ejdwyer.com and ndwyer@ejdwyer.com

Please take notice of the following:

- Registration for the CPD Exam (through ASPE) opens December 1, 2019 and closes March 19, 2020. Link to website: <https://aspe.org/CPDExam>
- Note the reference to any ASPE member, since it is generally more economical for one registering to take the CPD exam to be an ASPE member prior to registering for the exam. Please contact a local ASPE Chapter VP Membership ASAP to become a current member;
- ASPE members not classified as Full shall be subject an exam eligibility evaluation by Society that may take as many as five business days. (You may wish to take the initiative and visit the ASPE web-site and preview the requirements for Full membership to see if you would qualify); and
- The ASPE CPD Exam is scheduled to take place March 30 thru April 5, 2020.

Attendees to our review class are expected to bring to the review session at a minimum a calculator, writing materials, a copy of the CPD Review Manual and a hard copy of all attachments that may accompany any future e-mail follow-up responses. NOTE: CPD Review Manuals will be available for purchase before and following the CPD Review Session.

I look forward in seeing you at the review class.

Sincerely,

David Bailey

David M. Bailey, CPD, GPD, FASPE

DATE: February 1, 2020 from 8:30 AM to 3:30 PM
LOCATION: E.J. Dwyer Co. 10910 Pump House Road, Annapolis Junction, MD 20701
CONTACT: Kathy Dwyer – kdwyer@ejdwyer.com – Mobile: 443-250-0285
Ned Dwyer – ndwyer@ejdwyer.com – Mobile: 443-250-4275
Main Office – 240-553-0112



SHAFFER, TROXELL & HOWE Inc.

97 C Monocacy Blvd
Frederick, MD 21701

STHinc.com



Representing:

Grundfos • Peerless • Yeomans • PACO • Myers
Hydromatic • SyncroFlo • Cougar Controls • Triple Clear
Water Systems • Topp Industries • Primex Controls



Sale and Service Specialization:

Sump/Sewage Pump Stations • Water Booster Systems
Fire Pump Systems • Rainwater Harvesting Systems • Dosing Pumps
Point of Entry Water Filtration



Contact Our Engineering Account Rep

800-233-7718 • Mark.Smullen@sthinc.com

Your Solutions Partner in MD, DC, VA, DE and WV

Mueller Associates, Inc.
Consulting Engineers

Jeffrey W. Edwards, CPD, GPD
Chief – Plumbing & Fire Protection

1306 Concourse Drive, Suite 100
Linthicum, MD 21090
410.646.4500 tel > 410.646.4738 fax
410.913.4135 cell
jedwards@muellerassoc.com



Mechanical/Electrical Engineering



Gary Compton
Business Development Manager

8905 Danville Terrace
Frederick, MD 21701
Phone: 240.357.0587
gary.compton@moen.com
www.moencommercial.com

Mueller Associates, Inc.
Consulting Engineers

**Karen E. Schulte, PE, CPD,
LEED AP BD+C**
Mechanical Project Engineer

1306 Concourse Drive, Suite 100
Linthicum, MD 21090
410.646.4500 tel > 410.646.4738 fax
kschulte@muellerassoc.com



Mechanical/Electrical Engineering

Jason J. Eagles
VICE PRESIDENT



o – 410.825.6616 ext 1309
c – 410.250.4790
f – 410.825.6618

1432 Front Avenue
Lutherville, MD 21093 | jason@bayassociates.com
www.bayassociates.com



Sponsored by
 DELTA
see what Delta can do

Women of ASPE

Dedicated to **engaging**, **retaining**,
and **advancing** women in the plumbing
design industry through:

- Mentoring programs
- Membership outreach
- Partnerships with industry-related associations
- Educational and leadership offerings

To join WOA, email skidd@aspe.org
For more information, visit aspe.org/woa



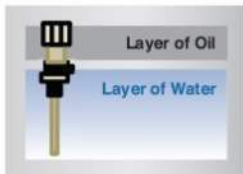


5 REASONS TO SPECIFY STANCOR™ OIL MINDER®

MODULAR SOLUTION TO MANAGE LIQUIDS IN AN ENVIRONMENTALLY FRIENDLY MANNER

Oil Minder has long been the standard for liquid management in hydraulic elevators. The system features Intellectual Property (IP) and is factory-wired to increase reliability while simultaneously lowering installation and maintenance costs.

1 CONDUCTIVE SENSING



Conductive sensing measures the electrical current in a liquid to reliably differentiate oil and water. The conductivity probes are self-cleaning, which makes them maintenance-free.

2 CUSTOMIZED SOLUTION



Stancor is knowledgeable about both Pumps and Controls. That has led to a modular system **customized for individual needs** of specific customers.

3 PLUG-AND-PLAY SYSTEM



Oil Minder's **plug-and-play, multi-pin connector** offers: minimized installation labor, assurance to the inspector and an efficient hand-off between plumbing and electric.

4 PUSH-TO-TEST FEATURE



The **“reset” button** actuates alarm lights and turns on the pump to ensure proper installation. Diagnostics can be run without entering confined space.

5 3RD-PARTY CERTIFICATION



The importance of reliability can't be understated. Stancor contracts **a third party** (Entela) to verify the entire system is manufactured to exacting specifications.



Represented in Delaware, Maryland and Virginia by AMES, Inc.

The Best Ball Valve on the Market

- Triple Stem Seal Lifetime Warranty
- **NSF** Certified for Potable Water
- Buy American Act Approved
- 100% Leak Tested
- Heat Treated Dezincification Resistant Brass



GROWING DEMAND FOR COGENERATION SOLUTIONS



PRODUCE HEAT AND POWER FROM THE SAME FUEL SOURCE
REDUCE UTILITY COSTS
OFFERS ENVIRONMENTAL BENEFITS
SIMPLE MAINTENANCE



CUMMINS-WAGNER

Cummins-Wagner.com



Lochinvar.com



Embrace the Technology

CircuitSolver®

A ThermOmegaTech® product

Balancing Checklist



- NSF 61 Certified
- American Made
- Thermostatic



CircuitSolver® thermostatic valves make balancing a domestic hot water recirculation system easier & less expensive for all types of buildings.



CircuitSolver® is a dynamic valve for a dynamic system.

For more information contact E.J. Dwyer Co.
customerservice@ejdwyer.com or 240-553-0112
or visit us on the web at www.ejdwyer.com



CHARLOTTE

PIPE AND FOUNDRY COMPANY

CHARLOTTE PIPE IS PROUD TO OFFER A FULL LINE OF
CAST IRON PIPE & FITTINGS MADE RIGHT HERE IN THE USA.

visit www.charlottepipe.com

LAURA SIMONS
Field Technical Representative
609-816-2350 laura.simons@charlottepipe.com



EDUCATION



PUBLIC VENUES

COMMERCIAL OFFICES

T&S IS HERE >

T&S is proud to be a trusted name across a wide range of markets — staying at the forefront of today's evolving industry and providing a vast selection of reliable solutions that meet required codes and compliances.

Learn more at tsbrass.com/markets.



HEALTHCARE



Find us in



T&S plumbing products represented in Maryland by: MidAtlantic RepSouth - 301-694-7795



BARGER⁺

WE REP THE BEST NAMES IN THE GAME.



BRIZO[®]

PEERLESS BrassCraft[®]



www.barger.agency



What's new at Delta Commercial?

- Matte Black water closet and urinal flush valves
- Solar-powered electronic faucets
- Newly designed electronic soap dispenser

Your local reps:

Samantha Givans

sam@barger.agency

571.643.9313

Erin Barger

erin@barger.agency

757.416.8725

Contact us for specification assistance, catalogs, samples, and info on Delta-sponsored Women of ASPE!



Brian Crisp, CPD
Vice President - Membership

Membership Report

Hello again Folks!

Hope everyone had a great holiday season, but it's back to the grind now unfortunately.

We have one new member this month. You know the drill, welcome them into the fold.

Bradley Barton – Henry Adams

We currently sit at 113 members. Just a reminder, you can renew your membership before the month that it expires. The expiration date is based on when you joined, so don't be afraid to renew early and avoid the stress :)

If you or anyone you know is interested in joining, or at least hearing about the benefits of membership, please don't hesitate to reach out to me. You can also join directly at <https://www.aspe.org/join>.

Thanks, and see you at the meetings!

Brian Crisp, CPD
Vice President, Membership

vpmember@baltimoreaspe.com



Ultima™ Diaphragm Flush Valves



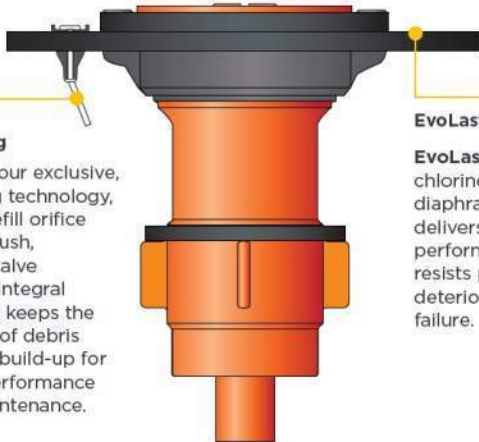
© AS America, Inc. 2019.



**DynaClean
Wiper Spring**



**EvoLast
Diaphragm**



DynaClean Wiper Spring

DynaClean, our exclusive, self-cleaning technology, cleans the refill orifice with every flush, preventing valve run-on. The integral wiper spring keeps the orifice clear of debris and mineral build-up for improved performance and less maintenance.

EvoLast Diaphragm

EvoLast, a premium, chlorine-resistant diaphragm material delivers consistent performance and resists premature deterioration and failure.

Stop Valve Run-On Before It Starts

Our exclusive DynaClean™ self-cleaning technology is engineered to stop valve run-on due to clogging. Equipped with a self-cleaning wiper spring, every flush clears debris and build-up, averting valve run-on and excess water usage.

Visit americanstandard-us.com for more information on the Ultima Diaphragm Flush Valve.



MidAtlantic
REPSOUTH
(301)-694-7795

*American
Standard*

UEP

UNITED ENERGY PRODUCTS

Family-owned and operated. Serving the
Mid-Atlantic Region for 35 years.

UEP Specializes in Heating and Venting Solutions.

Keeping our Communities Safe & Warm.

Follow UEP on



UEP Proudly Represents:



United Energy Products, Inc. • 1610 Professional Blvd. #K, Crofton, MD 21114

www.uepsales.com • 410.793.0202

BASyC™

MODEL NO. ABMV

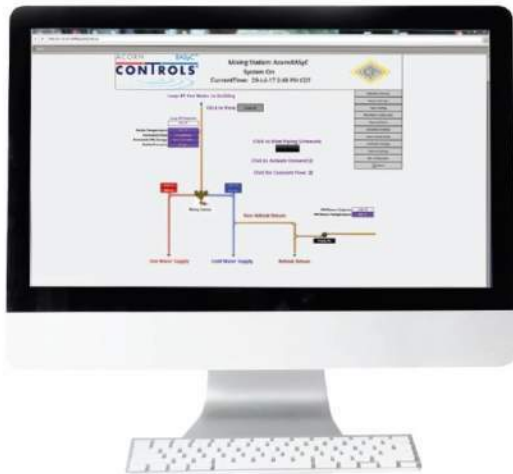
DIGITAL MIXING VALVE AND MONITORING SYSTEM

A BASyC™ SYSTEM WILL MAINTAIN CURRENT SETPOINT* DURING POWER FAILURE, OUTLET SENSOR LOSS OR SOFTWARE REBOOT AT ALL USER DEMAND REQUIREMENTS (ZERO TO PEAK).

UTILIZING THE AVAILABLE INLET/OUTLET PRESSURE SENSORS, BASyC OFFERS CALCULATED FLOW AND ENERGY DATA THAT'S ACCURATE AND RELIABLE!

*IAPMO CERTIFIED ACCURATE TO ASSE 1017

BASyC Operating Overview Screen



BASyC Control Panel



Optional User Interface



Command Station upgraded with BASyC



Chuck Swope, PE, CPD, LEED AP BD+C
Vice President—Technical

Technical Report

Happy New Year! I hope that you've enjoyed the interesting topics that have been presented during the first half of the year. I'm also told that the annual holiday party went off without a hitch, so kudos to our President and our board members for giving us this generous gift each year. We have a lot of exciting topics to close out the year as well as some special events. For this first time that I recall, our chapter will be offering a Professional Ethics presentation. It is a vital subject to bring up for all our members, not just those with a continuing education requirement. Our presenter, Terry McShane of McShane PC will discuss important topics like contract responsibilities, how to conduct yourself at a job site, and the risks that can be mitigated by proper contract terminology. Please note that attendance will be limited, so please sign up early.

For the remainder of the season, there is even more firsts for the chapter. In February, we will host Professor Ken Isman from the University of Maryland, College Park, who will demonstrate the importance of Hydraulic Calculations. Since our Pipe Assembly Event was so successful, we've brought Charlotte Pipe and Foundry to present our first hands-on class at our regular April meeting! If you attended the ASPE Technical Symposium, you may have already had a sneak preview of the practice rigs for assembling cast iron piping. Speaking of success, we will also be holding our second appearance at the Engineer's Club for Baltimore ASPE's contribution to Engineer's week in February! There are too many events to list here, so please check out our meeting schedule on the website to sign up early for anything that may interest you.

Terry McShane is the president of McShane PC and is the head litigator for a boutique defense litigation firm representing architects, engineers and design professionals. His law firm has offices in Maryland, District of Columbia and Virginia. He received his degree from Georgetown University Law Center and has served the design community for over 21 years.



Ethics and Engineering

Consider and evaluate your current projects to bring focus to the ethical boundaries and good practices employed each day.

October 7, 2019

[Victoria B. Valentine, P.E.](#)



Engineers and specifically those who work with fire protection regularly work to achieve public health, safety and welfare in their projects. This is the engineer's obligation of professional conduct to help create and sustain the natural and built environments in a way that does not put undue risk and danger on the public. A key component in achieving this is ethics.

Merriam-Webster.com defines ethics as, "the principles of conduct governing an individual or a group."

What principles of conduct govern your professional career? There are many organizations engineering professionals choose to affiliate with, such as the American Society of Plumbing Engineers (ASPE), the National Society of Professional Engineers (NSPE) or the Society of Fire Protection Engineers (SFPE), to name a few. These professional engineering organizations, and many others, each have a code of ethics for members to abide by.

A code of ethics is often comprised of the fundamental reminders about honesty, impartiality, competence, knowledge and skills. If you have not reviewed an ethics code, it might be a good time to find those for the organizations you hold a membership. The professional conduct of engineers is, in general terms, expected to be one where knowledge is used to the best of one's ability to do good works meeting the task goals and maintaining fair and safe conditions.

Ethics are not an everyday conversation for most engineers. So, how often do ethics arise in engineering work? They are a fundamental part of engineering work even if not discussed directly. For many, it starts with the simple philosophy that an engineer does not practice outside his or her area of expertise. This is highlighted in most licenses for those who are professional engineers (PEs).

This article originally appeared in *Plumbing Engineer*, a TMB Publishing publication. For more articles like this, please visit www.phcpropros.com.

However, while most jurisdictions regulate that professional engineers handle specific tasks, they do not regulate the disciplines of the engineers who actually complete the work. This is covered by engineers needing to understand and recognize where their expertise ends and another professional is required.

Expertise areas, conflicts of interest

Fire protection engineers come from many different disciplines and backgrounds. With the variety of areas to work in for a career, it is vital to abide by standards of ethics and only practice in subject matter that you hold expertise. For some fire protection engineers, this may be fire protection systems design or fire risk analysis or wildland-urban interfaces.

Although a fundamental competency is expected of a fire protection engineer (see “Minimum Competency for Fire Protection Engineers,” Plumbing Engineer, July 2018) across many subjects within a discipline, a more in-depth knowledge develops, forming an expertise in only some of the areas. Similarly, other engineering disciplines can demonstrate a variety of expertise areas.

Ethics have grown in importance with licensing boards, such that now many states require PEs to have a specific number of continuing education units each renewal cycle. Typically, the requirement is for an hour or two focusing on ethics every two or three years for those boards that have implemented this. Most of the professional societies offer courses to help members and nonmembers meet this requirement; many local chapters bring in speakers to help attendees gain these credits, too. Check with your state boards for their specific requirements pertinent to license renewals.

Another area where ethics are essential to an engineer’s career is identifying conflicts of interest. Some may be obvious; others may be more subtle. A conflict of interest occurs where the concerns and goals of one project/client where an engineer is working are incompatible with another project/client. In application, this means that cumulatively, projects need to be evaluated on an overview to consider any possible conflicts of interest and the best course of action.

NSPE has many resources for its members in the ethics category. Regulations are essential for the environment we live in, but without the strong ethics of the engineering community, things could still go awry. Tools frequently asked questions (FAQs), Board of Ethical Review Cases, and a Licensure and Ethics Hotline. Studying past cases and situations that arose for others may enlighten us to areas of concern needing more attention in our work.

Cases where ethics come into question can involve gray areas where interpretation and consideration of all the scenario details are crucial. This topic can impact everyone. Articles, newsletters and other resources are abundant if you look for them. The question is: Are you looking? Have you taken the time recently to recall how important

This article originally appeared in Plumbing Engineer, a TMB Publishing publication. For more articles like this, please visit www.phcpros.com.

your professional ethics are to your work, as well as those around you? Maybe it is time to share with your colleagues, too, or mentorees.

Take a look at NSPE's Engineers' Creed. It can offer a quick refresh on a topic that is not only core to sound engineering, but can help to remind us of the service engineering is to the world around us — whether you're a member, nonmember or work in and around engineering.

NSPE's Engineers' Creed

As a Professional Engineer, I dedicate my professional knowledge and skill to the advancement and betterment of human welfare.

I pledge:

- To give the utmost of performance;
- To participate in none but honest enterprise;
- To live and work according to the laws of man and the highest standards of professional conduct;
- To place service before profit, the honor and standing of the profession before personal advantage, and the public welfare above all other considerations.

In humility and with need for Divine Guidance, I make this pledge. Adopted by the National Society of Professional Engineers, June 1954.

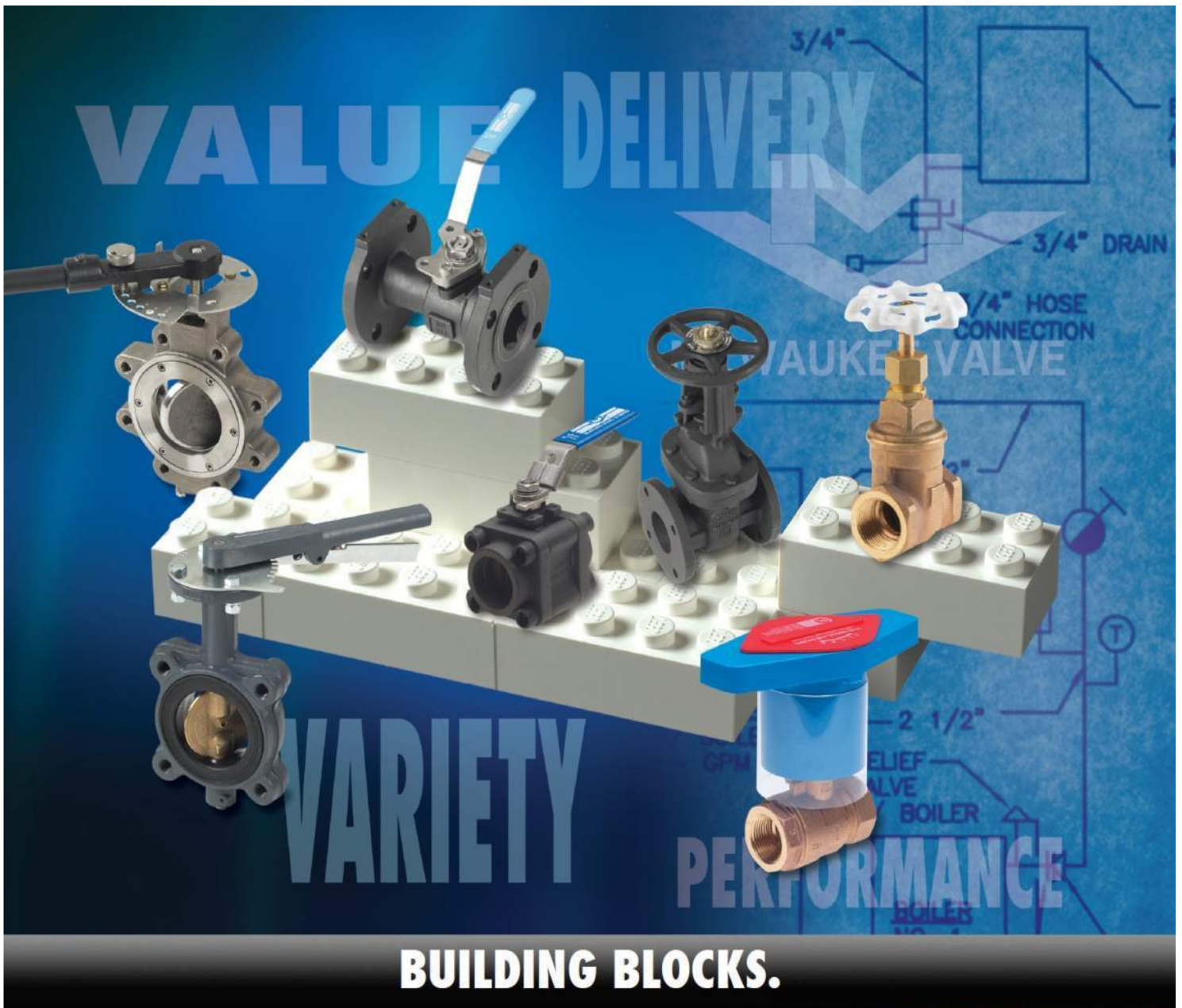
Ethics is often a field of gray, when we would like engineering to fit, similar to many calculations, into black-and-white rules. Taking the time to consider current projects and evaluate the ethics surrounding them can bring focus to the ethical boundaries and good practices employed every day.

Acting ethically is a responsibility that all engineers must carry. Protecting public health, safety and welfare is no easy task, but it is a challenge I know the engineering community can conquer. I

References:

- American Society of Plumbing Engineers, "ASPE Voluntary Code of Ethics." www.aspe.org/codeofethics. Cited August 28, 2019.
- Valentine, PE, Victoria B. "Minimum Competency for Fire Protection Engineers." Plumbing Engineer. American Society of Plumbing Engineers. July 2018, p 44-46.
- National Society of Professional Engineers, "Engineers' Creed." Adopted June 1954. www.nspe.org/resources/ethics/code-ethics/engineers-creed. Cited August 28, 2019.
- Society of Fire Protection Engineers, "Code of Ethics." Revised February 3, 2018. www.sfpe.org/page/codeofethics. Cited August 28, 2019.

This article originally appeared in Plumbing Engineer, a TMB Publishing publication. For more articles like this, please visit www.phcpros.com.



BUILDING BLOCKS.

Milwaukee Valve goes in whatever goes up.

For new construction, retrofits, remodeling or repairs, Milwaukee Valve can turn designing industrial and commercial piping systems into child's play. From gates, globes and checks to balls, butterflies, fire-protection, actuation and controls, choose from more than 10,000 valve types, sizes and configurations in the Milwaukee Valve product line.

When you need to pipe a potable system, use UltraPure™ valves to meet new federal lead-free standards. UltraPure includes the largest selection of lead-free valves on the market. Your Milwaukee Valve representative can even help you determine where UltraPure valves should be installed, and where it's still OK to use standard products.

For complete building systems or specific valves, don't kid around on quality, value and performance. Visit www.MilwaukeeValve.com or call 262.432.2700.

www.MilwaukeeValve.com • 16550 West Stratton Drive • New Berlin, Wisconsin 53151 • 262.432.2700 • Fax 262.432.2701
 The Milwaukee Valve and UltraPure™ logos are registered trademarks of Milwaukee Valve Co., Inc.
 © Milwaukee Valve Company, 2014



HUSKY CR 7000 THE NEWEST MEMBER OF OUR PACK.

Husky HD 2000

Husky SD 4000

Husky CR 7000





316 Stainless Steel

First Heavy-duty coupling for corrosive applications

The first of its kind, the Husky CR 7000 is made with 316 stainless steel to perform better than any others in highly corrosive environments.



Search Anaco Husky on  

www.ChooseHusky.com



American Standard

Commercial, Residential & Tankless
Water Heaters

Anaco & Husky Couplings

No Hub, Heavy Duty and
Specialty Couplings

Hammond

Plumbing and Heating Valves

G-Strut/G-Force

Strut, Hanger & Accessories

Everflow

Premier PVF & Specialty Products

Ipex/Enfield/Canplas & Guardian

Acid Waste Piping, High Purity Piping
Double Containment & Grease Traps
Schd 40 & 80 PVC and CPVC Pipe

Milwaukee Valve

Domestic & Import Metal
Ball, Butterfly, Check, Gate, Globe
High Performance Butterfly

Contact:

Brian J Barnard, President
Office phone: 410-720-0900
Cell phone: 410-977-7748

Eastman

Supplies, Water Heater Accessories

Niagara Conservation

High Efficiency Toilets

Centoco Corp

Toilet Seats

Speakman Company

Hospitality Fixtures
Commercial Brass
Emergency Equipment

Tyler Pipe

Domestic Cast Iron Pipe & Fittings
No Hub and Service Weight

Wade Drains

Specification Drainage Products
Roof and Floor Drains, Cleanouts
Carrier Fittings, Fixture Carriers
Siphonic Roof Drains

Hey Young! Professionals!

We want YOU to join our group!

AYP is dedicated to the needs of plumbing designers 35 years old and younger. Your local ASPE Chapter is busy organizing exciting opportunities to help you excel in your career:

- » Partnerships with other industry groups
- » Social and networking events
- » Professional development opportunities
- » Mentoring programs
- » And more!

Visit aspe.org/ayp to get involved.



**ASPE
YOUNG
PROFESSIONALS**



ESTABLISHED 1920
MEDICAL | SCIENCE | INDUSTRIAL

Nikita Patel, E.I.T., M.B.A.
Sales Engineer

Phone: (215) 340-5300

Cell: (570) 899-9090

Fax: (215) 340-5305

npatel@shermanengineering.com

1830 County Line Road
Unit #303
Huntingdon Valley, PA 19006

24-HOUR EMERGENCY: 215-340-5300
www.shermanengineering.com



KIBART
CONSULTING ENGINEERS

Matthew E. Obenchain, P.E.

Senior Mechanical Project Engineer

901 Dulaney Valley Road, Suite 301

Towson, Md 21204

410.494.1111

WWW.KIBART.COM



Kathleen Dwyer
kdwyer@ejdwyer.com

E.J. Dwyer Co., Inc.

10910 Pump House Road
Annapolis Junction, MD 20701
p. 240.553.0112 f. 888.811.4830 m. 443.250.0285
ejdwyer.com

J. Richard Wagner, PE, LLC

Mechanical Engineering Consulting Services

207 Locknell Road

Timonium, Maryland 21093-3323

410-252-9095

(c) 443-465-0835

Email: dick-wagner@comcast.net



AMES, INC.
Manufacturers' Representative
Since 1957

COMMERCIAL INDUSTRIAL LINE CARD

Fiberglass Basins & Covers

AK Industries

Sump Pumps & Sewage Ejectors

Weil, Tsurumi, Stancor, Wilo

Control Panels

AMES/MESSCO Controls & Systems, Weil, Wilo

Domestic Water Systems

Tigerflow, Aurora, Wilo

Rainwater & Reuse

Tigerflow, ATS

Grease Interceptors

"Proceptor" Fiberglass Grease and Oil Separators

Stancor

Elevator Sump Pump with (Oil Minder) System

Stainless Steel Pumps

H2O Traffic Load Covers

USF Fabrication, AK Industries, Greenturtle

HVAC Pumps & Accessories

Tigerflow, Aurora, Wilo



WWW.AMESINC.COM

8918 Hermann Drive, Columbia, MD 21045 301-621-8899 (DC) / 410-995-6971 (Balt.) / 410-381-5760 (Fax)

The **JOYCE** AGENCY

MANUFACTURERS REPRESENTATIVE

The trusted representatives for the premier manufacturers



We believe in forming life-long strategic partnerships with the best portfolio of Manufacturers in the Plumbing and HVAC industry. We believe our quality product offerings, best in-class training, and our highly motivated team members will inspire the customer relationships that grow sales while developing trust and mutual success.



MATT MORRIS

410.903.9177

mmorris@thejoyceagency.com

Looking for additional credits?

We offer a broad variety of Continuing Education Courses. Follow the link below to view our full list of CEU's.

[CLICK HERE!](#)

The Joyce Agency | 703.866.3111 | www.thejoyceagency.com

CHOOSE SUSTAINABILITY. SPECIFY CAST IRON SOIL PIPE.



Did you know cast iron soil pipe is made from scrap iron? Attend a Lunch and Learn to earn CEUs and understand when and how to specify cast iron soil pipe for your commercial projects.

Contact your local technical services manager today.



LEARN MORE:
mcwaneplumbingtechservices.com





There is no equal.



McGuire proudly specified and installed in the Freedom Tower, NYC

For over 65 years, McGuire Manufacturing Co., Inc. has been a chosen leader by the plumbing industry's best. From the designer, to the wholesaler to the contractor, our high-end commercial plumbing fixture trim and ADA trim are specified and installed on projects across North America. When quality products are required on time, you can count on McGuire.

More solutions from the company you trust.



mcguiremfg.com

Contact McGuire's manufacturer representative
RepSouth MidAtlantic Office 301 • 694 • 7795

MidAtlantic
REPSOUTH



Made in America—It's not just a label. AB&I Foundry has been manufacturing cast iron soil pipe and fittings for DWV plumbing systems for over a century. It's about the people, it's about the products, and it's about manufacturing here in the U.S.A.

PROUDLY
MADE IN THE
USA



**CAST IRON SOIL
PIPE & FITTINGS**

ABIFoundry.com • 800-GOT-IRON

2019-2020 ASPE Baltimore Chapter Meeting Schedule

Date: **September 25, 2019**

Speaker: WSSC

Topic: Cross Contamination Control

Date: **October 23, 2019**

Speaker: Generac

Topic: Natural Gas Sizing for Emergency Generators

Date: **November 20, 2019**

Speaker: Viega

Topic: Opportunistic Pathogens 101

Date: **December 13, 2019**

Event: Holiday Party

Location: [Mustang Alley's](#)

Date: **January 22, 2020**

Speaker: McShane PC

Topic: Professional Ethics in Engineering

Date: **February 26, 2020**

Speaker: Professor Kenneth Isman—UMCP

Topic: Importance of Fire Protection Hydraulic Calcs

Date: **March 25, 2020**

Speaker: PVI

Topic: Water Heater Sizing, Construction, and Efficiency

Date: **April 22, 2020**

Speaker: Charlotte Pipe

Topic: Cast Iron Pipe

Date: **April 24, 2020**

Event: Golf Outing

Location: [The Timbers at Troy](#)

Date: **May 27, 2020**

Speaker: Watts

Topic: Automatic Control and Pressure Reducing Valves



Monthly Sponsorship Opportunities

The Baltimore Chapter of ASPE continues to have successful meetings and is looking to continue improving throughout the year.

The Chapter has the following sponsorship opportunities for each month:

Tabletop Presentations: \$100 to provide a tabletop presentation of equipment or material relative to the plumbing profession. The tablespots will be set up from the beginning to the end of the monthly meeting and provides the opportunity to provide a brief (under 5 minutes) presentation.

Please make checks payable to the Baltimore Chapter of ASPE.

Contact Jeff Edwards or Kathy Dwyer if interested

jedwards@muellerassoc.com

kdwyer@ejdwyer.com

