



### **Upcoming Meeting**

**Date:** February 27, 2019

**Time:** 6:00pm to 8:00pm

**Place:** Olive Grove Restaurant

**Topic:** Specialty Gas Sources  
And Distribution

**Speaker:** Niki Patel & Craig Ranalli  
Sherman Engineering

#### Meeting Format

*6-6:30 Social*

*6:30-6:45 Announcements and Table Tops*

*6:45 Dinner Served*

*7:00-8:00 Speaker*



CHAPTER AWARD OF MERIT

Recipient **2017-2018**

### **In This Issue**

- Presidents Report –pg2
- Engineers Week 2019 –pg4
- Award Program –pg5-8
- Project Spotlight-pg10
- Board of Directors -pg12
- VP Technical Report –pg15
- Advertising Opportunities–pg16
- WOA Event Update -pg21
- Historian Article - pg23
- Holiday Party Album - pg30
- Technical Article –pg25
- Membership Report –pg28
- CPD Review Class 2019 –pg32
- Meeting Schedule –pg33

### **MEETING LOCATION**



**Olive Grove**  
Restaurant & Lounge

**705 North Hammonds Ferry Road  
Linthicum, Maryland 21090  
Phone: 410.636.1385**

**WWW.BALTIMOREASPE.COM**



**Jeffrey W. Edwards, CPD ,GPD  
President**

## President's Report

Here we are already into a cold February 2019, YUCK!!!

The exciting part for our chapter this month is for the very first time, we will be participating in Engineers Week with our own presentation at the Engineers Club in Baltimore.

On Friday, February 15<sup>th</sup> from 10 am to 1:30 pm, we will be presenting Plumbing Engineering to approximately 55 high school students.

Chris Imhof, our chapter's Education Chair has put together a power point presentation to illustrate and describe how a person goes thru college, choosing the plumber engineering field, earn a P.E, then has the opportunity to work on all the different types of plumbing systems that are needed in all our industry, from normal toilet rooms to the healthcare and laboratory fields.

There will also be information regarding entering the plumbing engineering field for people who do not choose to go thru college but can still be very successful in our field.

There is much more to Chris' power point that he will describe in more detail next month.

Chris, Chuck and myself have met several times recently to throw around ideas, thoughts, etc. to help Chris develop his power point presentation.

Along with myself, Chuck and Chris as presenters, we've also invited, Kathy Dwyer (EJ Dwyer), Jason Eagles (Bay Associates), Dick Wagner (V.P.-Legislative), Andrew Cahill (Uponor) Greg Frey (Victaulic fire protection) and Nikita Patel (Sherman Engineering) to participate to describe their roles in the plumbing engineer field.

We are very excited to present for the first time for Engineers Week. Chris, Chuck and myself and update everyone next month in our reports.

This month we will begin handing out chapter membership ten year awards for the first time. Please plan on attending this month's meeting to be a part of this special event.

Last but not the least, if you intend to sit for ASPE's Certified Plumbing Designer (CPD) in a couple months, please remember there is a CPD review course on Saturday, February 16<sup>th</sup> at EJ Dwyer Company in Annapolis Junction, MD. Dave Bailey will be the review class instructor. Dave has earned many awards from ASPE for his CPD review classes. For more information, please refer to the flier in this month's newsletter.

If you want to speak with me regarding our chapter, newsletter or anything else, please feel free to contact me.

Best Regards,

Jeff Edwards, CPD, GPD

President-ASPE Baltimore Chapter

# WHAT SETS MUELLER ASSOCIATES APART?



## A GREAT EXPERIENCE



Mueller Associates has been engineering great experiences since 1966.

- MECHANICAL ENGINEERING
- ELECTRICAL ENGINEERING
- PLUMBING ENGINEERING
- FIRE PROTECTION
- LIGHTING DESIGN

[www.muellerassoc.com](http://www.muellerassoc.com)



# Mueller



MUELLER ASSOCIATES IS A PROUD SPONSOR OF ASPE



# CELEBRATE FEB 17-23 NATIONAL ENGINEERS WEEK 2019

the ENGINEERS CLUB & Engineers Week Council invite you to Engineers Week

Since 1951, National Engineers Week has helped to increase public awareness and appreciation of the engineering profession and to celebrate the accomplishments of engineers. Join us at the Engineers Club and the Baltimore Museum of Industry for the many activities celebrating National Engineers Week and the Maryland Engineering Challenges.

## MARKING the Sixty-Eighth Anniversary of NATIONAL ENGINEERS WEEK

Meet Maryland's most prominent engineers & technology educators at these activities.

National Engineers Week was founded in 1951 by The National Society of Professional Engineers and is celebrated annually at the time of George Washington's Birthday. Our first president was a military engineer and a land surveyor. Like our first president, today's engineers are problem solvers. They design, develop and oversee the design, manufacture and construction of products, machines and structures. Engineers Week is a time to recognize the contributions engineers have made to our way of life and to encourage students to pursue engineering careers to perpetuate advancements for future generations.

The Engineers Club and its affiliated Associate Societies encourage everyone to come out and support these activities at The Garrett-Jacobs Mansion, 11 West Mount Vernon Place and The Baltimore Museum of Industry, 1415 Key Highway.

For more information call 410-539-6914 or log on to [www.esb.org](http://www.esb.org). For information on other challenges in the Maryland Engineering Challenges Series, visit the Baltimore Museum of Industry website at [www.thebmi.org](http://www.thebmi.org), and click the Programs link.

Happy Sixty-Eighth NATIONAL ENGINEERS WEEK!

### Engineers Week Activities

Tuesday	February 19 <sup>th</sup>	ASHRAE Program – Green Building Technology At the Engineers Club  10 am to 1:30 pm A Program & Luncheon for High School Students & Advisors to meet with engineers, discuss career opportunities & complete a design challenge using Green Building Technology.
Wednesday	February 20 <sup>th</sup>	SAME: A Day with an Engineer - A National Event Hosted At Various Engineering Workplaces  9 am to 3 pm Coordinated Locally by the SAME Baltimore Post For more info contact: Blaine Linkous at <a href="mailto:daywithanengineer@wbcm.com">daywithanengineer@wbcm.com</a>
Wednesday	February 20 <sup>th</sup>	Consider a Career in Engineering – A Program & Luncheon  At the Engineers Club For Middle & High School Students & Advisors to introduce them to the different branches of civil engineering & show them how a team of engineers interacts to design and construct a project.  10 am to 1:30 pm Presented by the ACEC/MD, MDOT- SHA & the Maryland Quality Initiative (MdQI) Industry Training & Recruitment Subcommittee
Thursday	February 21 <sup>st</sup>	WTS - Introduce a Girl to Engineering – A National Event Program & Luncheon At the Engineers Club  10 am to 1:30 pm A program and luncheon for High School Girls & Advisors to introduce them to the field of civil engineering, provide an opportunity to hear from successful women who have made a career in the transportation industry and to practice what they have learned via several fun hands on activities.  Presented by the Women's Transportation Seminar Baltimore Chapter
Friday	February 22 <sup>nd</sup>	Technology in Transportation - A Program & Luncheon  At the Engineers Club A Program & Luncheon for introducing Middle School Students to the steps the Maryland Department of Transportation (MDOT) takes to plan, design, construct and maintain roads/bridges using various modules of interactive technology.  10 am to 1:30 pm Presented by MDOT
Thursday	April 11 <sup>th</sup>	The Engineers Club Annual Honor Awards At the Engineers Club  6 pm to 9 pm Awards program for Associate Society Council Member for Engineer of the Year, Young Engineer of the Year, Project of the Year, Business Firm of the Year and Meritorious Service.



Jason J Eagles  
VP Affiliate, Scholarship Chair, Newsletter

Dedication is defined as a solemn commitment of your time to a cherished purpose. It is a loyalty or allegiance to a cause. I cannot think of a better term that defines many of the members of the Baltimore Chapter of ASPE. Being a member of this society is a choice and often involves hours of time devoted to the local chapter. We certainly hope the Baltimore Chapter has supported your technical knowledge and allowed for networking opportunities with other plumbing professionals. Without the dedication of its members, we would not be as strong as we are today. Speaking on behalf of the board, we wish to thank and honor you for that dedication. This year we will be celebrating those with 10 Years or more of being an ASPE Member. This program is long overdue and I am proud to be a part of it. We will be handing out over 50 awards during the next several meetings. Anyone receiving an award is welcome to attend that meeting paid by the Chapter. Please spread the word and join us as we celebrate these milestones. Please see the following pages for the members being recognized.

### **Award Presentations**

10 Year Award– February 27, 2019

20 Year Award – March 27, 2019

30 & 40 Year Award – April 24, 2019

See pages 9-11 for award recipients and additional information



## **10 Year Awards – February 27, 2019**

Richard Grier  
Brent William Inners  
Philip Joseph Holthaus  
Robert Adam Kegan  
Patrick Joseph Plourde  
Eric Paul Sellers  
Benjamin John Ploskon  
Merton Harris  
Thomas J. King  
Michael Shacklock  
Bryan W. Ondrasik  
Kenneth J. Krach  
Andrea M. Crabb  
Jason Joseph Eagles  
Dan Galloway  
Donald John Yudiski  
Paul Edwin Abbott Jr  
Carlton Ross  
Thomas G. Schrieber Jr  
Walter Leo Miller  
Herbert John Heubisch

If you are receiving an award and attending this meeting, please RSVP on the website [www.baltimoreaspe.com](http://www.baltimoreaspe.com). The Baltimore Chapter would like to cover this expense to further show our appreciation. Please RSVP for the meeting online and use the bypass payment option when prompted. You will need to click on Member Ticket \$35 and follow the steps to payment where you can bypass payment.



## **20 Year Awards – March 27, 2019**

Robert E. Ruskey  
Cory S. Colassard  
David S. Crutchfield  
Robert A. Weaver II  
Michael J. Purtell  
Steve C. Trageser  
Kirby W. Slear  
Sherry A. Abbott-Adkins  
Kathleen M. Dwyer  
Daniel M. Booze  
John D. Stitz  
Robert J. Allen  
David R. Spencer  
Neil P. Stabley  
David Charles Van der Vossen  
Igor Z. Knizhnik  
Michael Kevin Hunt

If you are receiving an award and attending this meeting, please RSVP on the website [www.baltimoreaspe.com](http://www.baltimoreaspe.com). The Baltimore Chapter would like to cover this expense to further show our appreciation. Please RSVP for the meeting online and use the bypass payment option when prompted. You will need to click on Member Ticket \$35 and follow the steps to payment where you can bypass payment.



## **30 & 40 Year Awards – April 24, 2019**

### **30 Year Awards**

Charles E. Kozlowski  
Roy D. Ebersole  
Jeffrey W. Edwards  
Michael A. Brame  
Richard C. Goins  
J. Thomas Federline Jr.  
Jerry W. Rutkowski  
Frederick Koelber  
Daniel J. Gardner  
Michael P. Nelson  
Aaron L. Mullenax  
David R. Hoffman

### **40 Year Awards**

Donald F. Steiner  
Stephen Hudson  
John Richard Wagner  
Robert J. Stryiewski

If you are receiving an award and attending this meeting, please RSVP on the website [www.baltimoreaspe.com](http://www.baltimoreaspe.com). The Baltimore Chapter would like to cover this expense to further show our appreciation. Please RSVP for the meeting online and use the bypass payment option when prompted. You will need to click on Member Ticket \$35 and follow the steps to payment where you can bypass payment.

# Why Cement Lasts & Glass Goes Fast

## Did you know?

- ▶ Failure of a tank's protective lining is the #1 reason for tank replacement

### Cement Lined

vs

- ▶ 1/2" thick Hydrastone is 100 times thicker than glass
- ▶ Evenly covers all internal surfaces without cracks or nicks
- ▶ Highly resistant to corrosion from the harsh effects of hot water
- ▶ 100% of all wetted surfaces covered by cement or non-ferrous material

### Glass Lined

- ▶ Only .005" mm thick, so there is less protection
- ▶ Does not cover all internal surfaces evenly
- ▶ Requires a sacrificial anode rod which draws corrosion towards it. Needs to be replaced annually



## Hubbell Hydrastone® Lined Tanks

Hubbell [Hydrastone-cement](#) is specifically formulated to withstand the harsh effects of elevated water temperatures and water chemistry.

As water fills a cement lined tank, it's absorbed into the tank lining. This causes the absorbed water to give up its oxygen, creating an inert layer between the steel tank and the corrosive hot water preventing corrosion and tank failure.



Hubbell is a leader in the design, engineering and manufacturing of water heaters for use in demanding Commercial, Industrial, Marine/Offshore and Naval markets and offers an extensive line of water heating products including electric, gas, steam, indirect, tankless, special purpose and more! All Hubbell products are engineered for dependability, long life, and trouble-free service.

Represented by:



Bay Associates Group | 1432 Front Ave | Lutherville, MD 21093 | P: 410.825.6616

### For More Information:

Contact - Jason Eagles  
Jason@bayassociates.com

## KIBART

Mechanical / Electrical Engineers

### Wake Forest University Bowman Gray Center for Medical Education

Winston-Salem, NC

Construction Cost: \$48M, Completion: 2016

#### Wexford Science & Technology

Kibart provided mechanical, electrical, and plumbing design engineering services for this adaptive re-use project that was a complete gut and renovation, taking the buildings down to their core shell, with all new M/E/P for two Historic Buildings (totaling 309,000 SF) in Winston-Salem, North Carolina. This abandoned warehouse and tobacco facility originally built in 1926, had an envelope which consisted of nothing more than glass block and concrete walls, with no insulating factor. Kibart designed the mechanical, electrical, and plumbing systems exceeding several crucial design requirements; energy efficiency, accommodate current and future owner needs, and cost savings. This five-floor facility includes a five-story atrium (plus the basement), achieved a LEED Platinum Certification and exceeds ASHRAE 90.1 energy goals by 41%.

This renovation project also included the buildout of ±167,500 SF Bowman Gray Center for Medical Education, and included the following type of spaces:

- Laboratories
- Offices
- Classrooms
- Meeting Rooms
- Triage Hospital Simulator Rooms
- Anatomy Lab
- Lecture Halls
- Café
- Lounge Areas
- Conference Rooms
- Administrative Support



Design provided for mechanical, electrical and plumbing building systems including the following:

- A combination of instantaneous and central water heating for potable and non-potable uses.
- Lab gas with turrets at lab benches and corridor emergency shutoff (solenoid valves).
- Oxygen storage room and other hazardous storage room ventilation.
- Complete NFPA 13 Fire Protection System.
- Anatomy lab with critical environment supply diffusers, low exhaust grilles and exhausted anatomy tables to control the hazardous formaldehyde.
- All new plumbing piping, low flow fixtures, etc.
- Potable and non-potable waste streams.
- High efficient condensing natural gas hot water boilers to heat the building.
- Natural gas rooftop emergency generators, 700 kw total.
- Independent temperature control zones for critical spaces.
- Variable Air Volume HVAC distribution and temperature control.
- Units on emergency power for critical rooms.
- IT area with genius bar.
- Dual medium voltage electric services with four customer transformers.
- Four 480V service switchboards, 10,000 amps total.
- Full LED lighting with automated controls.
- Central 80kva UPS system.
- Addressable Fire Alarm System.

In 2017, Kibart was awarded the "2017 Honor Award" during the American Council of Engineering Consultants Excellence Awards ceremony.



Before



After



If you would like to contribute a project to this section, please email Jeff Edwards at [jedwards@muellerassoc.com](mailto:jedwards@muellerassoc.com) or Jason Eagles at [jason@bayassociates.com](mailto:jason@bayassociates.com)

# AMERICAN MUSCLE

---

## TYLER TOUGH



[TylerTough.com](http://TylerTough.com)

11910 County Road 492 Tyler, TX 75706 800.527.8478

## Board of Directors

### President

Jeffrey W. Edwards, CPD, GPD  
Mueller Associates  
[jedwards@muellerassoc.com](mailto:jedwards@muellerassoc.com)

### Vice President - Technical

Charles J. Swope, PE, CPD, LEED AP BD+C  
Mueller Associates  
[cswope@muellerassoc.com](mailto:cswope@muellerassoc.com)

### Vice President - Legislative

J. Richard Wagner, PE  
J. Richard Wagner, P.E., LLC  
[dick-wagner@comcast.net](mailto:dick-wagner@comcast.net)

### Vice President - Membership

Andrew Cahill  
Uponor-USA  
[Andrew.cahill@uponor.com](mailto:Andrew.cahill@uponor.com)

### VP Affiliate, Scholarship, Newsletter

Jason J. Eagles  
Bay Associates Group  
[jason@bayassociates.com](mailto:jason@bayassociates.com)

### Education Committee Chair

Christopher Imhof PE, CPD  
WSSC  
[Christopher.imhof@wsscwater.com](mailto:Christopher.imhof@wsscwater.com)

### Treasurer

Kathleen Dwyer  
EJ Dwyer Company Inc.  
[kdwyer@ejdwyer.com](mailto:kdwyer@ejdwyer.com)

### Corresponding Secretary

Brian Crisp, CPD  
Johnson, Mirmiran & Thompson  
[BCrisp@jmt.com](mailto:BCrisp@jmt.com)

### AYP, WOA—Liaison

Karen Schulte, PE, CPD  
Mueller Associates  
[kschulte@muellerassoc.com](mailto:kschulte@muellerassoc.com)

### Historian

Steve Hudson, PE, CPD  
[shudson124@outlook.com](mailto:shudson124@outlook.com)

### Administrative Secretary

George Gruner, PE  
Mueller Associates  
[ggruner@muellerassoc.com](mailto:ggruner@muellerassoc.com)

**Mueller Associates, Inc.**  
Consulting Engineers

**Jeffrey W. Edwards, CPD, GPD**  
Chief – Plumbing & Fire Protection

1306 Concourse Drive, Suite 100  
Linthicum, MD 21090  
410.646.4500 tel > 410.646.4738 fax  
410.913.4135 cell  
[jedwards@muellerassoc.com](mailto:jedwards@muellerassoc.com)

Mechanical/Electrical Engineering



**Mueller Associates, Inc.**  
Consulting Engineers

**Karen E. Schulte, PE, CPD,  
LEED AP BD+C**  
Mechanical Project Engineer

1306 Concourse Drive, Suite 100  
Linthicum, MD 21090  
410.646.4500 tel > 410.646.4738 fax  
[kschulte@muellerassoc.com](mailto:kschulte@muellerassoc.com)

Mechanical/Electrical Engineering



**Jason J. Eagles**  
VICE PRESIDENT



o ~ 410.825.6616 ext 1309  
c ~ 410.250.4790  
f ~ 410.825.6618

1432 Front Avenue | [jason@bayassociates.com](mailto:jason@bayassociates.com)  
Lutherville, MD 21093 | [www.bayassociates.com](http://www.bayassociates.com)



**Brian Crisp, CPD**

Johnson, Mirmiran & Thompson, Inc.  
📍 40 Wight Avenue  
Hunt Valley, MD 21030  
☎ (d) 410-316-2217  
✉ [bcrisp@jmt.com](mailto:bcrisp@jmt.com)

# The high efficiency you want with a warranty you never thought possible.



## POWER VTX® Condensing Water Heater

- 500 to 1000 MBtu
- Up to 95.8% thermal efficiency
- 225 gallons of storage
- Full modulation with 4-to-1 turndown

## Conquest® Condensing Water Heater

- 199 to 1000 MBtu
- Up to 96% thermal efficiency
- 100 or 130 gallons of storage
- Full modulation on inputs higher than 400,000 BTU



Featuring tanks and heat exchangers fabricated from AquaPLEX duplex stainless steel.  
**15-year tank warranty** with 8 years full and 7 additional years prorated.

**Represented by:**

Bay Associates Group  
www.bayassociates.com  
Contact: Jason Eagles  
Jason@bayassociates.com



## T&S IS HERE >

T&S is proud to be a trusted name across a wide range of markets — staying at the forefront of today's evolving industry and providing a vast selection of reliable solutions that meet required codes and compliances.

Learn more at [tsbrass.com/markets](http://tsbrass.com/markets).



Find us in  
**MASTERSPEC**  
building specs done right



EDUCATION



PUBLIC VENUES



HEALTHCARE



COMMERCIAL OFFICES

T&S plumbing products represented in Maryland by: MidAtlantic RepSouth - 301-694-7795

MidAtlantic  
**REPSOUTH**

**CHARLOTTE**  
PIPE AND FOUNDRY COMPANY

**CHARLOTTE PIPE IS PROUD TO OFFER A FULL LINE OF  
CAST IRON PIPE & FITTINGS MADE RIGHT HERE IN THE USA.**

visit [www.charlottepipe.com](http://www.charlottepipe.com)

LAURA SIMONS  
Field Technical Representative  
609-816-2350 [laura.simons@charlottepipe.com](mailto:laura.simons@charlottepipe.com)



# Engineered For Every Application



**T-100CG**  
DZR Lead Free  
brass commercial  
plumbing valve

**T-100SSE**  
Corrosion resistant  
TEA coated valve with  
stainless steel trim

**T-100SSS**  
High temperature 250  
WSP Seal weld brass  
ball valve

**T-100NE**  
Versatile Gas ball  
valve with 23 industry  
certifications

Our T-100 line of ball valves all feature a triple stem seal with Lifetime Warranty, are 100% made in Italy. Multiple accessories are available.



[www.jomarvalve.com](http://www.jomarvalve.com)



**Chuck Swope, PE, CPD, LEED AP BD+C  
Vice President—Technical**

## Technical Report

I would like to thank Mark Barrick for another excellent presentation at January’s meeting. His expertise and experience are appreciated when discussing a complicated topic such as Fire Pump Controllers. If there was anything that you could take away from the discussion, it would be that you should reach out to your manufacturer’s reps for advice early when designing a fire pump for your fire protection system.

Our February meeting technical topic will be Specialty Gas Sources and Distribution. Niki Patel and Craig Ranalli from Sherman Engineering will present and cover topics on what types of gasses are typically provided in laboratories, where they originate, and the topics that need to be addressed when dealing with them. There is a lot to cover on these complicated topics, but the presentation is intended to inform you what to consider when designing specialty gasses. Fortunately, our presenters are experienced in these designs.

Sherman Engineering is a leader in vacuum pump and compressed air technology. Originally founded in 1920, they successfully became a 100% employee-owned company in 2011. Although they specialize in vacuum and compressed air for the healthcare industry, they also provide engineered solutions for the industrial, process and research industries. Their vision is to become the exclusive first-in-class Sales and Service Representative and Distributor of vacuum pumps, air compressors, and specialty gases for their customer base. At Sherman Engineering, they couple their application expertise with a strong product portfolio, including Beacon Medaes, Gardner Denver Nash, Gardner Denver Compressors, Standard Xchange and Edwards Vacuum.

Their customers include hospitals, laboratories, both within universities and pharmaceutical institutions, potheyr plants, paper mills, food and beverage producers, petro-chemical refineries and many more users of general industrial applications.

Niki Patel has worked with Sherman Engineering for several years now, starting as a Project Manager before being promoted to a Regional Sales Engineer position. Her primary territory includes Delaware and Maryland. With the extensive work she does in the healthcare industry, she has completed her ASSE certification to be a Medical Gas Specialist. She has a degree in Mechanical Engineering, as well as her M.B.A. Currently an Engineer in Training, she hopes to take her Professional Engineer exam within the next two years.



<b>Mueller Associates, Inc.</b> Consulting Engineers	<b>Charles J. Swope, PE, CPD,</b> <b>LEED AP BD+C</b> Mechanical Project Engineer
1306 Concourse Drive, Suite 100 Linthicum, MD 21090 410.646.4500 tel > 410.646.4738 fax cswope@muellerassoc.com	
Mechanical/Electrical Engineering	 <b>Mueller</b>

# ADVERTISING

## Newsletter Advertising:

- As a paid advertiser you will have your advertisement in the newsletter for either a full year (11 editions) or on a monthly bases.
- Manufacturer's Reps may run a full page advertisement for an upcoming seminars at the full page monthly cost.
- Ads for the year will begin in the September issue and run through the June issue
- Advertisements starting mid-year will be billed on a monthly basis.
- All ads must be paid in full prior to the advertisement being included in the newsletter.
- Advertiser must provide ads in high resolution, and must one of the following formats: PDF, TIFF, PNG, Bitmap, Windows Metafile.

•Cost per advertisement size is as follows:


<u>Size</u>	<u>per Year</u>	<u>per Month</u>
Full page	\$750	\$75
½ page	\$500	\$50
Bus. Card	\$250	\$25

Please Contact [Jason Eagles](#) or [Jeff Edwards](#)

Make checks payable to Baltimore Chapter of ASPE. Please contact the chapter Treasurer with any questions.

Kathy Dwyer  
EJ Dwyer Company Inc.  
[kdwyer@ejdwyer.com](mailto:kdwyer@ejdwyer.com)

**Kathleen Dwyer**  
[kdwyer@ejdwyer.com](mailto:kdwyer@ejdwyer.com)



**E.J. Dwyer Co., Inc.**

10910 Pump House Road  
Annapolis Junction, MD 20701  
p. 240.553.0112 f. 888.811.4830 m. 443.250.0285  
[ejdwyer.com](http://ejdwyer.com)

**Mike McCarthy**  
Technical Manager-Mid Atlantic Region



Viega LLC  
1800 Southwood Drive  
Nashua, NH 03063 USA  
Mobile 571 328 1143  
[michael.mccarthy@viega.us](mailto:michael.mccarthy@viega.us)

**J. Richard Wagner, PE, LLC**



Mechanical Engineering Consulting Services  
207 Lockneil Road  
Timonium, Maryland 21093-3323

410-252-9095 (c) 443-465-0835

Email: [dick-wagner@comcast.net](mailto:dick-wagner@comcast.net)



Embrace the Technology

# CircuitSolver®

A ThermOmegaTech® product

## Balancing Checklist



- NSF 61 Certified
- American Made
- Thermostatic



**CircuitSolver® thermostatic valves make balancing a domestic hot water recirculation system easier & less expensive for all types of buildings.**



**CircuitSolver® is a dynamic valve for a dynamic system.**  
For more information contact EJ Dwyer at  
[customerservice@ejdwyer.com](mailto:customerservice@ejdwyer.com) or 240-553-0112



# KIMAX® Glass Drain and Vent Systems



- Low volatile organic compounds (VOCs)
- Will not burn or emit toxic fumes
- Maximum corrosion resistance
- Flexibility, adaptability, modularity
- Safe and simple installation
- Lowest life-cycle costs

Territory Distributor  
N.H. Yates and Co., Inc.  
(800) 878-8181  
[www.nhyates.com](http://www.nhyates.com)

SCHOTT North America, Inc  
[info.drainline@us.schott.com](mailto:info.drainline@us.schott.com)  
[www.us.schott.com/drainline](http://www.us.schott.com/drainline)

**SCHOTT**  
glass made of ideas

# Hey Young! Professionals!

**We want YOU to join our group!**

AYP is dedicated to the needs of plumbing designers 35 years old and younger. Your local ASPE Chapter is busy organizing exciting opportunities to help you excel in your career:

- » Partnerships with other industry groups
- » Social and networking events
- » Professional development opportunities
- » Mentoring programs
- » And more!

Visit [aspe.org/ayp](http://aspe.org/ayp) to get involved.



**ASPE  
YOUNG  
PROFESSIONALS**

## Stainless Steel Threshold Drain™

A linear drain that effectively prevents water from cascading floor to floor during an emergency egress to meet IBC Code 3007.3



FIG. NUMBER 9679



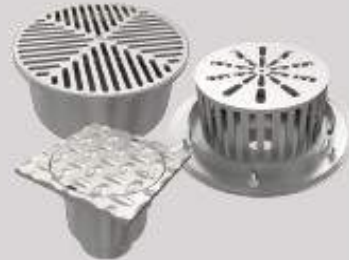
### ZIP TRENCH™ TRENCH DRAIN SYSTEM

12" WIDE 9960 SERIES  
6" WIDE 9940 SERIES



### Stainless Steel Grease Interceptors

8000SS-8100SS SERIES



### Stainless Steel Drainage Products

9600 SERIES  
Floor Drains • Floor Sinks  
Cleanouts • Trench Drains  
Interceptors



**JAY R. SMITH MFG. CO.**  
MEMBER OF MORRIS GROUP INTERNATIONAL  
P.O. Box 3237 • Montgomery, AL 36109  
TEL: 334.277.8520

[www.jrsmith.com](http://www.jrsmith.com)



MidAtlantic  
**REPSOUTH**

9060 Junction Drive  
Annapolis Junction, Md 20701  
(301)-694-7795 office  
(301)-694-3559 fax  
[midatlanticrepsouth.com](http://midatlanticrepsouth.com)



**NIBCO®**  
presssystem®

# FIND YOUR FIT

Choose from Over 500 Press Valve SKUs, the Largest Offering in the Industry

FIND YOUR FIT AT [NIBCO.COM/PRESS](http://NIBCO.COM/PRESS)

Mike Fullem | Area Manager  
443.902.3315 | [fullemm@nibco.com](mailto:fullemm@nibco.com)

Dave Lazear | Sr. Engineered Systems Specialist  
302.740.1202 | [lazeard@nibco.com](mailto:lazeard@nibco.com)

## THERE'S A BIG IDEA CHANGING 1" SMALL DIAMETER




Fast, no mess and no pipe wrenches

Ask about our new Innovative Groove System | **IGS**™ for 1" Sch. 40 and Sch. 10 pipe – before someone else does



[FireLockIGS.com](http://FireLockIGS.com)

**victaulic®**


© 2017 VICTAULIC COMPANY. ALL RIGHTS RESERVED.




Karen Schulte, PE, CPD, LEED AP BD+C  
AYP & WOA Liaison

## WOA Event Update

Unfortunately, mother nature stepped in the night of our January WOA event cancelling the event. We're looking into dates, locations and cool paintings in order to reschedule the WOA Paint night event, when hopefully winter weather wont foil our plans! Once we've decided on new date we will send out the information and open up registration online. If you missed out on our original date, fear not, you'll have a chance to come to our re-scheduled date!



Sponsored by  see what Delta can do

# Women of ASPE

Dedicated to **engaging, retaining,** and **advancing** women in the plumbing design industry through:

- Mentoring programs
- Membership outreach
- Partnerships with industry-related associations
- Educational and leadership offerings

To join WOA, email [skidd@aspe.org](mailto:skidd@aspe.org)  
For more information, visit [aspe.org/woa](http://aspe.org/woa)



For more information on Women of ASPE please visit: <https://www.aspe.org/WOA>

Contact Karen Schulte for more information on the Baltimore Chapter AYP and WOA at [kschulte@muellerassoc.com](mailto:kschulte@muellerassoc.com)



**There is no equal.**



For over 65 years, McGuire Manufacturing Co., Inc. has been a chosen leader by the plumbing industry's best. From the designer, to the wholesaler to the contractor, our high-end commercial plumbing fixture trim and ADA trim are specified and installed on projects across North America. When quality products are required on time, you can count on McGuire.

More solutions from the company you trust.



[mcguiremfg.com](http://mcguiremfg.com)

Contact McGuire's manufacturer representative  
RepSouth MidAtlantic Office 301 • 694 • 7795

MidAtlantic  
**REPSOUTH**

**CUMMINS-WAGNER**

**Your Plumbing Systems Experts.**

**Engineering Expertise & Continuing Education (CWU)**



*Lochinvar is the Industry Leader in Technology and performance of Condensing Water Heaters & Boilers*



Crest Condensing Boiler



FTXL Fire Tube Boiler



Shield Water Heater



Armor Water Heater

*As your Lochinvar representative, contact us any time for assistance.*

**Call 800-966-1277 or visit [Cummins-Wagner.com](http://Cummins-Wagner.com)**



**AMES, INC.**  
Manufacturers' Representative  
Since 1957

## COMMERCIAL INDUSTRIAL LINE CARD

Fiberglass Basins & Covers

AK Industries

Sump Pumps & Sewage Ejectors

Weil, Tsurumi, Stancor, Wilo

Control Panels

AMES/MESSCO Controls & Systems, Weil, Wilo

Domestic Water Systems

Tigerflow, Aurora, Wilo

Rainwater & Reuse

Tigerflow, ATS

Grease Interceptors

"Proceptor" Fiberglass Grease and Oil Separators

Stancor

Elevator Sump Pump with (Oil Minder) System

Stainless Steel Pumps

H2O Traffic Load Covers

USF Fabrication, AK Industries, Greenturtle

HVAC Pumps & Accessories

Tigerflow, Aurora, Wilo



[WWW.AMESINC.COM](http://WWW.AMESINC.COM)

8918 Hermann Drive, Columbia, MD 21045 301-621-8899 (DC) / 410-995-6971 (Balt.) / 410-381-5760 (Fax)



# Highland Tank®



Proudly Made In AMERICA

## Petroleum & Chemical Storage Tanks



## Wastewater Treatment Systems



## Grease Removal Systems



## ASME Pressure Vessels & Water Storage Tanks



- Motor & Aviation Fuel
- Heating & Lube Oils
- Chemicals
- Biofuels
- Propane
- Underground
- Aboveground
- Fireguard
- Diked
- Horizontal
- Vertical

- Oil/Water Separators
- Oil/Sand Interceptors
- Solids Stormwater Interceptors
- Hydrocarbon Filtration Systems
- Collection Catch Basins

- Grease Interceptors
- Interior & Exterior
- Large & Small
- Rectangular & Cylindrical
- Solids Removal

- Rainwater Harvesting
- Greywater Reuse
- Potable Water
- Fire Protection
- Boiler Blow-Down
- Chlorine Contact
- Hydropneumatic

Contact: Chas Tevis  
 ctevis@highlandtank.com  
 Phone: 814-360-0101

Please visit us at [www.highlandtank.com](http://www.highlandtank.com).

## Specialty Gas Source and Distribution

During the mid-1700's, so many of the gases that laboratories rely on today for daily operation were first discovered by scientists as they learned how to separate individual elements from their molecular compounds. Nitrogen and Hydrogen, among many others were soon being used in many key laboratory processes, including calibration, analytics, research, testing, lasers, and much more. However, with such great power came great responsibility to ensure the proper containment and distribution of these gases, many of which had characteristics which could prove deadly if improperly handled.

Within this presentation, we largely cover the current standards described in *NFPA 55: The Compressed Gases and Cryogenics Fluids Code*. With this code, we hope to teach the reader the proper design and selection of specialty gas sources and pipeline accessories required to distribute them. By first identifying the application for the gas, the user can immediately confirm important specifications, such as flow rate, required pressure and most importantly, purity level.

These gases are provided by three main sources: containerized sources, mechanical pumps or through gas conditioning. Every facility will vary in gas consumption, but that is the most critical factor in selecting the best source. When consumption is low, gas cylinders are preferred. For larger usage facilities, liquid containers or bulk tanks are ideal. Their large capacities ensure less frequent turnover in gas cylinders. These liquid container and bulk tank systems include vaporizers and heaters to convert the liquid to gas as needed.

Vacuum pumps and air compressors are used for mechanical pump sources. Although they are a very common source for laboratory gases, they will not be within the scope of this presentation. If further information is required, please contact Sherman Engineering Company.

Gas conditioning is the process of conditioning, or concentrating, a gas out of a compound. For example, Nitrogen or Oxygen can be concentrated from air, which contains approximately 78% and 20% of each, respectively. This method is able to control the pressure, flow rate and purity level of the gas, up to five nines.

NFPA 55 identifies a control area as a building, or portion of a building, within which hazardous materials are allowed to be stored, dispensed, used or handled in quantities not exceeding the maximum allowable quantity (MAQ). Tale 6.3.1.1 of this code identifies the MAQ for all types of gases, including flammable, oxidizing, and even inert gases per control area. Based on the interaction of gases within different classifications, the use of gas cabinets and detection monitors is required where appropriate.

Across the world, there have been thousands of deaths caused by the wrongful handling of dangerous gases. The presentation hopes to ensure that Engineers designing these important systems follow the proper guidelines for storage and distribution to prevent further calamities in the future.



**MILWAUKEE VALVE**

262-432-2700 • Fax 262-432-2701  
www.milwaukeevalve.com

Milwaukee Valve Representative  
Barnard Associates, Inc.

Brian Barnard  
433 Hahn Road, Unit D  
Westminster, MD 21157  
410-720-0900 • Fax 410-720-0904  
brianjbarnard@yahoo.com

# BARGER<sup>+</sup>

## RHEEM WATER HEATERS

- COMMERCIAL/RESIDENTIAL GAS/ELECTRIC
- TANKLESS - INCLUDING POU ELECTRIC
- HYBRID HEAT PUMP WATER HEATERS
- **NEW** PRODUCT: TRITON COMMERCIAL HEATER
  - LEAK DETECTION SYSTEM AND EcoNET
  - UNIVERSAL RETROFIT READY W/ MULTIPLE CONNECTION POINTS
  - TRIPLE PASS HEAT EXCHANGER FOR MAX THERMAL EFFICIENCY
- **NEW** PRODUCT: COMMERCIAL TANKLESS 2.0
  - MANIFOLD CONTROL READY UNITS
  - HOT START PROGRAMMING
  - OVERHEAT FILM WRAP



## DELTA COMMERCIAL

- MANUAL/ELECTRONIC FAUCETS, FLUSH VALVES
- SHOWER SYSTEMS
- COMMERCIAL ACCESSORIES INCLUDING ADA BARS

## DELTA RESIDENTIAL

### BRIZO

### PEERLESS

### WOODFORD

- FREEZELESS COMMERCIAL HYDRANTS
- RESIDENTIAL WALL FAUCETS
- YARD AND ROOF HYDRANTS



### FERNCO

- COUPLINGS, STORM DRAINS, WAX FREE TOILET SEALS

### WATCO

### BRASSCRAFT

### KALDEWEI

### JACUZZI

### BOOTZ



YOUR LOCAL MD/DC/VA ENGINEER SPECIALIST

**Samantha Givans** <sup>+</sup>

Plumbing Consultant

Cell- 571.643.9313

Email- sam@barger-assoc.com

CHECK OUT OUR NEW INSTAGRAM AND WEBSITE BARGER.AGENCY



Andrew Cahill — Membership

## Membership Report

I cannot believe I find myself writing an article for the February newsletter already. January was here and gone in a blur and it appears winter now wants to make its presence known. Life on the road can be challenging enough without the extra elements, but I suppose it keeps things interesting. Sad that snow days now entail being pinned down in a hotel far from the comforts of home.

Latest reports show Baltimore with 110 total members, a result of some attrition over the holiday months. Baltimore ranks 5<sup>th</sup> in region 1, 30 behind DC and 10 ahead of Montreal. I am hopeful that our renewed attention to the chapter and increase to local ASPE events starts a trend in the opposite direction come spring.

Please let me know if I can be of assistance to anyone interested in joining ASPE. You can direct them to <https://www.aspe.org/join> or email me at [andrew.cahill@uponor.com](mailto:andrew.cahill@uponor.com).

*Did you know that engineering firms may offer reimbursement to employees for affiliation with professional organizations such as ASPE? In fact, participation with local chapters is often encouraged and provides significant benefits. In addition to the ability to attain CEUs from monthly educational seminars and networking opportunities with other industry professionals, members are provided with a volume of the Plumbing Engineering Design Handbook for each year of participation – a key resource in completing CPD testing. Have a conversation with your firm’s principal about your options for joining ASPE.*



**Andrew Cahill**  
Technical Sales Rep

(800) 321-4739  
Cell: (443) 841-9525  
[www.uponor-usa.com](http://www.uponor-usa.com)  
[andrew.cahill@uponor.com](mailto:andrew.cahill@uponor.com)

**Uponor**

Uponor, Inc.  
5925 148th Street West  
Apple Valley, MN 55124

Family-owned and operated. Serving the  
Mid-Atlantic Region for over 30 years.

Dedicated to meeting all of your plumbing needs.

UEP

Proudly Represents:



[www.facebook.com/uepsales](http://www.facebook.com/uepsales)



@UEP\_Sales



[linkedin.com/company/uepsales](http://linkedin.com/company/uepsales)



@UEPSales

United Energy Products, Inc. • 1610 Professional Blvd. #K, Crofton, MD 21114

[www.uepsales.com](http://www.uepsales.com) • 410.793.0202

# The JOYCE AGENCY

## MANUFACTURERS REPRESENTATIVE



Fire system backflow and fluid control.

[www.amesfirewater.com](http://www.amesfirewater.com)



High quality toilet seats that meet any need for residential and commercial applications

[www.toiletseats.com](http://www.toiletseats.com)



Specification drains, interceptors, carriers and other specialties

[www.blucherdrains.com](http://www.blucherdrains.com)



Complete system of cast iron, PVC, CPVC, ABS, Flowguard Gold, and Chem Drain acid waste.

*In NOVA, DC, and MD only*

[www.charlottepipe.com](http://www.charlottepipe.com)



Flexible stainless steel connectors for natural gas, liquefied propane gas, and a wide-array of other liquids and gases.

[www.dormont.com](http://www.dormont.com)



Leading supplier of sanitary ware ceramics, bathroom furniture, accessories and wellness ideas

[www.duravit.us](http://www.duravit.us)



Commercial and residential electric tankless water heater

[www.eemax.com](http://www.eemax.com)



Stainless steel sinks, faucets, and accessories, plus water coolers and drinking fountains.

*In NOVA, DC, and MD only*

[www.elkay.com](http://www.elkay.com)



Backflow prevention devices for irrigation and water services.

[www.febcoonline.com](http://www.febcoonline.com)



Unique line of primary and secondary roof drains engineered into one fixture.

[www.froetindustries.com](http://www.froetindustries.com)



Concealed installation systems for commercial wall-hung toilets, as well as bath waste and overflows for bathtubs

[www.geberit.us](http://www.geberit.us)



Quality crafted kitchen and bath fixtures, accessories, lighting, and mirrors.

[www.brasstech.com](http://www.brasstech.com)



Torches, tips, and accessories for welding, cutting, soldering, brazing, and heating.

[www.gossonline.com](http://www.gossonline.com)



The innovative leader in emergency eyewash and shower industry.

*In NOVA, DC, and MD only*

[www.gesaftev.com](http://www.gesaftev.com)



Quality water coolers and drinking fountains for any application.

[www.halseytaylor.com](http://www.halseytaylor.com)



Stylish and innovative water delivery for the shower, bath and kitchen

[www.hangrohe-usa.com](http://www.hangrohe-usa.com)



Global leader in copper tubing and fittings.

[www.muellerindustries.com](http://www.muellerindustries.com)



Strainers, check valves, butterfly valves and specialties

*In NOVA, DC, and MD only*

[www.muellersteam.com](http://www.muellersteam.com)



Plumbing chemicals, cements, drains, tubular products and specialties Oatey, Hercules, Harvey, Cherne, Dearborn

[www.oatey.com](http://www.oatey.com)



Acid waste and high purity piping system.

[www.orionfittings.com](http://www.orionfittings.com)



A broad range of thermostatic safety valves and systems for domestic water applications

*In SOVA only*

[www.powerscontrols.com](http://www.powerscontrols.com)



Combines alluring form and effortless function in an easy-to-install linear drain systems

An Oatey SCS Company

[www.quickdrainusa.com](http://www.quickdrainusa.com)



High efficiency tankless water heaters and home heating solutions

[www.rinnai.us](http://www.rinnai.us)



Protective enclosures for outdoor backflow preventers

[www.safe-t-cover.com](http://www.safe-t-cover.com)



Electronic and manual flush valves, sensor faucets, and china

*In NOVA, DC, MD only*

[www.sloanvalve.com](http://www.sloanvalve.com)



Big Dipper automatic grease removal units plus Trapzilla super capacity grease interceptors and solid separator

[www.thermaco.com](http://www.thermaco.com)



Corrugated stainless steel gas piping for residential and commercial application

[www.tracpipe.com](http://www.tracpipe.com)



Backflow prevention products, pressure regulating devices, ball valves, plus other water system products.

[www.watts.com](http://www.watts.com)



Specification drains, interceptors, carriers and other specialties

[www.watts.com](http://www.watts.com)



Laboratory faucets and valves, and emergency eye wash and shower equipment.

[www.wsflab.com](http://www.wsflab.com)

**Matt Morris**

Call: 410-903-9177

Email: [mmorris@thejoyceagency.com](mailto:mmorris@thejoyceagency.com)



**SHAFER, TROXELL & HOWE Inc.**

97 C Monocacy Blvd  
Frederick, MD 21701

**STHinc.com**



## Representing:

Grundfos • Peerless • Yeomans • PACO • Myers  
Hydromatic • SyncroFlo • Cougar Controls • Triple Clear  
Water Systems • Topp Industries • Primex Controls



## Sale and Service Specialization:

Sump/Sewage Pump Stations • Water Booster Systems  
Fire Pump Systems • Rainwater Harvesting Systems • Dosing Pumps  
Point of Entry Water Filtration



**Contact Our Engineering Account Rep**

**800-233-7718 • Mark.Smullen@sthinc.com**

**Your Solutions Partner in MD, DC, VA, DE and WV**

## CPD Review Class 2019

**The Washington DC and Baltimore ASPE Chapters** will be providing a Joint Baltimore-Washington, DC ASPE Chapter CPD Review Session on Saturday, February 16, 2019 at the training center of E.J. Dwyer Co. in Annapolis Junction, MD. (Note: A bad weather make-up date is scheduled for the following Saturday, February 23rd.) The session will be from 9:00 AM to 3:00 PM (or longer as needed) with a lunch break. Bagels, juice & coffee in the morning and lunch will be provided by the good people of E.J. Dwyer Co. Directions to the office in Annapolis Junction (north of Laurel) may be found on their company website at [www.ejdwyer.com](http://www.ejdwyer.com) under Contact Us or by clicking google maps link: <https://goo.gl/maps/4nEvRNG6kEK2>

Any ASPE member interested in attending this session is required to forward an e-mail to either Kathy Dwyer or Ned Dwyer at the following respective addresses: [kdwyer@ejdwyer.com](mailto:kdwyer@ejdwyer.com) and [ndwyer@ejdwyer.com](mailto:ndwyer@ejdwyer.com)

### Please take notice of the following:

- Registration for the CPD Exam (through ASPE) opens December 1, 2018 and closes March 22, 2019. Link to website: <https://aspe.org/CPDExam>
- Note the reference to any ASPE member, since it is generally more economical for one registering to take the CPD exam to be an ASPE member prior to registering for the exam. Please contact a local ASPE Chapter VP Membership ASAP to become a current member;
- ASPE members not classified as Full shall be subject an exam eligibility evaluation by Society that may take as many as five business days. (You may wish to take the initiative and visit the ASPE web-site and preview the requirements for Full membership to see if you would qualify for Full membership); and
- The ASPE CPD Exam is scheduled to take place April 5 and/or April 6, 2018.

Attendees to our review class are expected to bring to the review session at a minimum a calculator, writing materials, a copy of the CPD Review Manual and a hard copy of all attachments that may accompany any future e-mail follow-up responses. NOTE: CPD Review Manuals will be available for purchase (at a discount) before and following the CPD Review Session.

I look forward in seeing you at the review class.

Sincerely,

*David Bailey*

David M. Bailey, CPD, GPD, FASPE

DATE: February 16, 2018 from 9AM to 3PM  
LOCATION: E.J. Dwyer Co. 10910 Pump House Road, Annapolis Junction, MD 20701  
CONTACT: Kathy Dwyer – [kdwyer@ejdwyer.com](mailto:kdwyer@ejdwyer.com) – Mobile: 443-250-0285  
Ned Dwyer – [ndwyer@ejdwyer.com](mailto:ndwyer@ejdwyer.com) – Mobile: 443-250-4275  
Main Office – 240-553-0112

# 2018-2019 ASPE Baltimore Chapter Meeting Schedule

---

Date: **September 26, 2018**  
Speaker: Craig Boyce - Kemper  
Topic: Legionella, ASHRAE 188, and Minimizing Risk

Date: **October 24, 2018**  
Speaker: Chris Imhof - WSSC  
Topic: WSSC 2016 Code Update

Date: **November 28, 2018**  
Speaker: Jesse Rodriguez -Aqua Treatment Services  
Topic: Rainwater Harvesting for Potable Reuse

Date: **December 12, 2018**  
Event: Holiday Party  
Location: [Mustang Alley's](#)

Date: **January 23, 2019**  
Speaker: STH  
Topic: Fire Pump Controller Applications

Date: **February 27, 2019**  
Speaker: Sherman Engineering Company  
Topic: Lab Specialty Gas Sources and Distribution

Date: **March 27, 2019**  
Speaker: Highland Tank  
Topic: Grease Interceptor Design

Date: **April 24, 2019**  
Speaker: Ultra Pure Water Systems  
Topic: Evoqua

Date: **April 26, 2019**  
Event: Golf Outing  
Location: [The Timbers at Troy](#)

Date: **May 22, 2019**  
Speaker: EJ Dwyer  
Topic: Digital Mixing Valves

---



## Monthly Sponsorship Opportunities

The Baltimore Chapter of ASPE continues to have successful meetings and is looking to continue improving throughout the year.

The Chapter has the following sponsorship opportunities for each month:

**Tabletop Presentations:** \$100 to provide a tabletop presentation of equipment or material relative to the plumbing profession. The tabletops will be set up from the beginning to the end of the monthly meeting and provides the opportunity to provide a brief (under 5 minutes) presentation.

Please make checks payable to the Baltimore Chapter of ASPE.

Contact Jeff Edwards or Kathy Dwyer if interested

[jedwards@muellerassoc.com](mailto:jedwards@muellerassoc.com)

[kdwyer@ejdwyer.com](mailto:kdwyer@ejdwyer.com)

